

Typical floor finishes

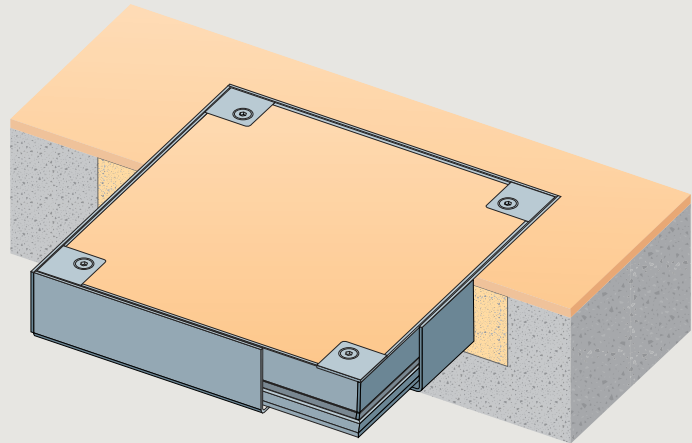
Ceramic tiles, marble, terrazzo, concrete, resin, wood and all hard floors.

Performance

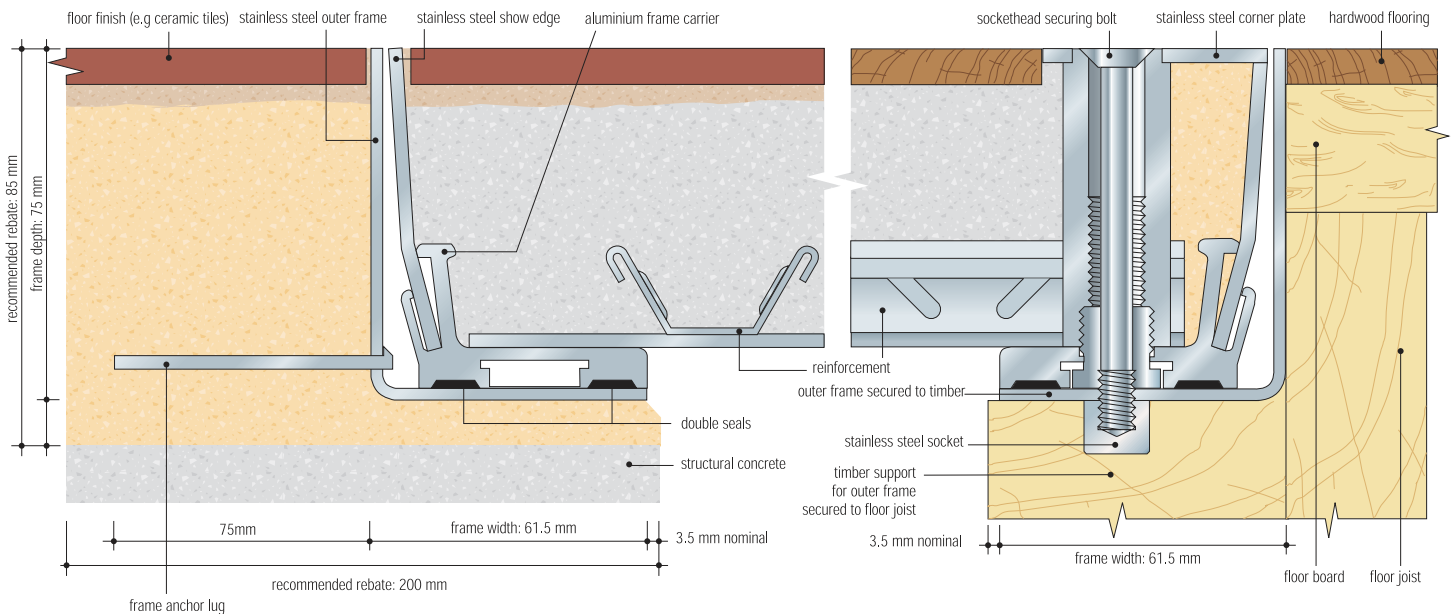
Up to 5 tonne pneumatic tyre wheel load (cars and light delivery vehicles).

Options

Double seal. 3 hour fire rating to BS 476: Part 20: 1987 available; ask for indicative test report.
Inset lifting points.



Cross section showing concrete and timber sub-floors (scale 1:2)



Typical specification clause for 7500 series

Recessed floor access/ duct/ multipart* covers and frames shall be Howe Green Ltd 7500 series, stainless steel, with 3 hour fire rating to BS 476: Part 20: 1987*, galvanised base plate and reinforcement, double sealed with socket head securing bolts/ unsealed with blanking bolts*. Sizes shall be as shown on contract drawings nos ...† Covers to be supplied complete with ...† sets of combined lifting/ securing keys. All to be manufactured and supplied by Howe Green Ltd, Marsh Lane, Ware, Hertfordshire, SG12 9QQ, Great Britain, and installed in accordance with the manufacturer's installation details and sitework guide.

* Delete as appropriate. † Insert appropriate numbers & quantities

Size

Overall frame size = clear opening + 130 mm e.g. 600 x 900 mm clear opening = 730 x 1030 mm overall frame.

Performance Note: Trucks with small wheels and solid tyres, such as pallet rollers, may limit sizes to less than the stated maximum span. Alternatively, greater spans may be used, but at reduced loadings.

Weight

A 7500 series cover when filled with concrete weighs approx. 155 kg/m².

See installation guide on page 28.

Maximum / minimum sizes

