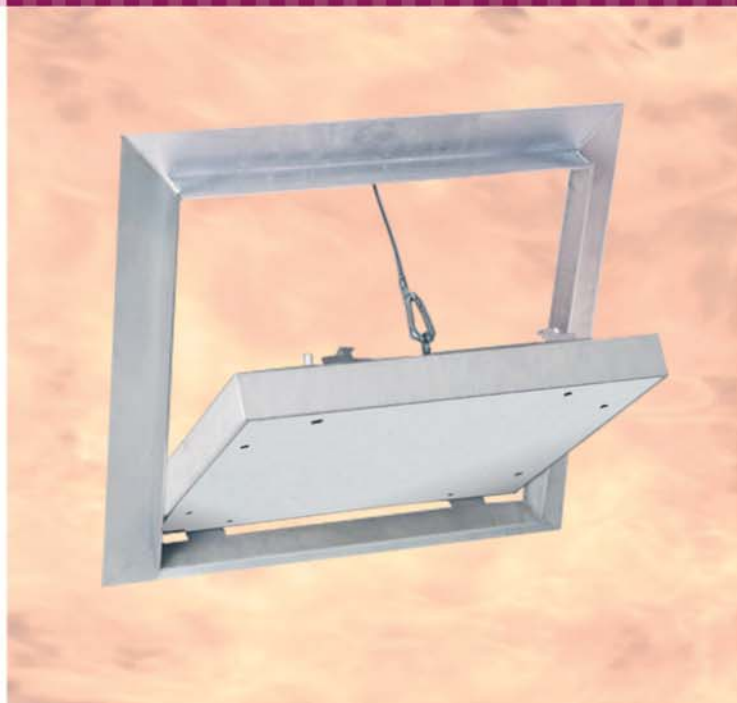


Fire protection access panel

F6 - BD60 System for plasterboard ceilings

EI60

60 minutes
Fire protection



European
classification

in accordance with EN 13501-2
(Classification from fire-resistance tests)

Product description:

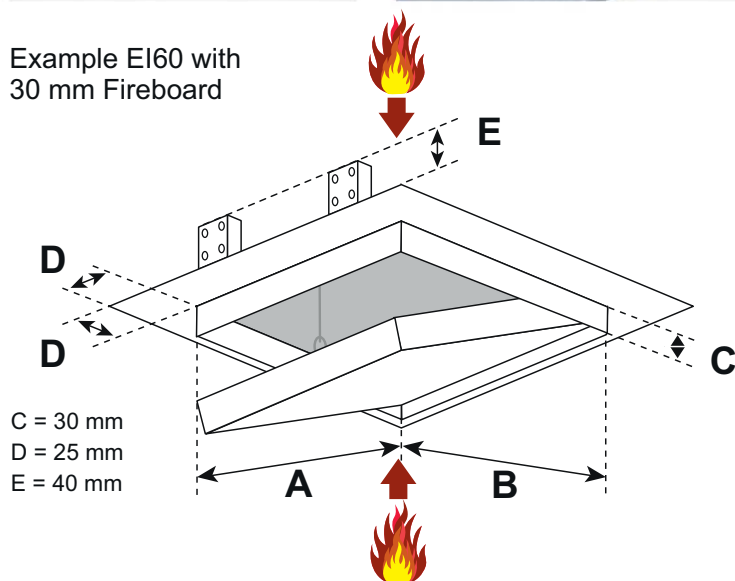
The access panel is made of aluminium profiles with Fireboard inlay 30 mm (2 x 15 mm). The two frames of the access panel each consist of four individual frame parts that are firmly connected to each other by a special welding process. The access panel is equipped with two catch guards. To avoid possible accidents, these must be re-hung after each opening of the door leaf. There is an air gap of 2.5 mm between the frame and the door leaf, which is provided with a circumferential fire protection seal (foaming). The concealed snap locks open the access panel when pressed.



The door leaf can be unhinged



Example EI60 with
30 mm Fireboard



Possible applications:

Stand-alone highly fire-retardant plasterboard suspended ceilings EI60

Dimensions:

The fire protection access panel is available in the following standard sizes. Dimensions A and B are as follows:

- 200 x 200 mm
- 300 x 300 mm
- 400 x 400 mm
- 500 x 500 mm
- 600 x 600 mm
- tested up to 800 x 800 mm

The dimensions D and E remain the same in each case. Dimension C corresponds to the respective planking thickness.

Special designs:

Special dimensions in any desired size can be manufactured on request (for minimum and maximum sizes, see general building authority test certificate!).

Locks:

The access panel can be designed with the following lock types:

- FS** Square lock with white rosette
- Z** Round cylinder lever lock with key
- PZ** Profile cylinder lock with metal rosette

Special advantages of our system

- Inexpensive solution
- Short-term delivery possible
- Quick, trouble-free installation
- Technically mature solution
- Flush installation in plasterboard ceilings



Watch installation
video