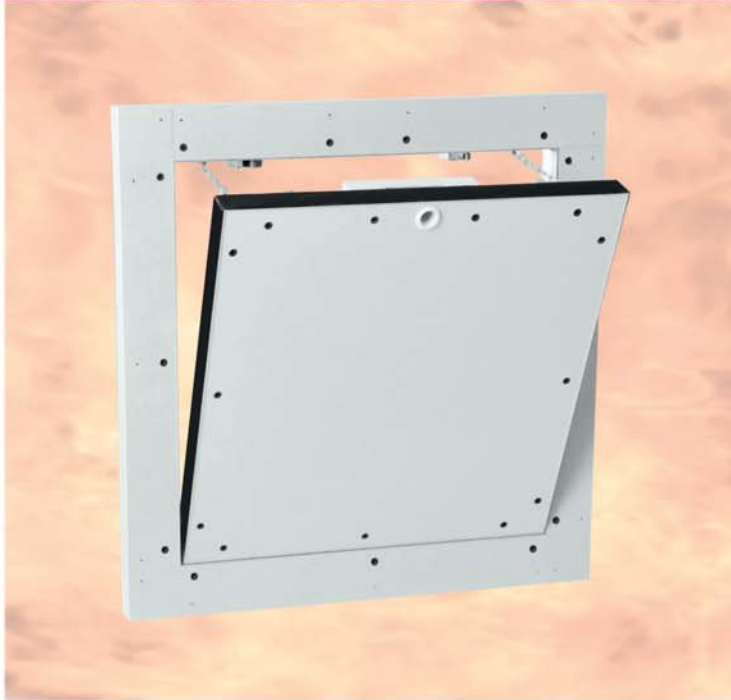


Fire protection access panel

F5 - 30 System for installation shafts/walls

I30/EI30

30 minutes
Fire protection



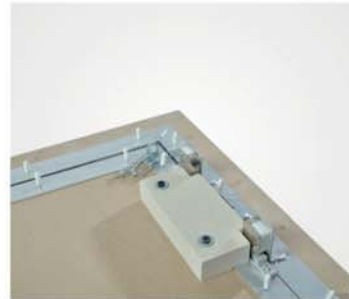
Fire protection: according to general building authority approval/general type approval: Z-6.55-2603



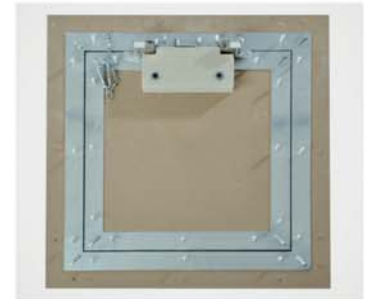
in accordance with EN 13501-2
(Classification from fire-resistance tests)

Product description:

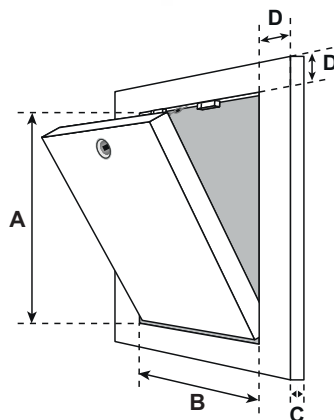
The access panel is made of aluminium profiles with 25 mm (I30) plasterboard inlay (GKF). The two frames of the access panel each consist of four individual frame parts that are firmly connected to each other by a special welding process. The access panel is equipped with two catch guards. To avoid possible accidents, these must be re-hung after each opening of the door leaf. There is an air gap of 1.5 mm between the frame and the door leaf, which is provided with a



The door leaf can be removed



Example I30
with 25 mm GKF



D = 55 mm

circumferential fire protection seal (foaming). You can choose between a square lock (FS), a round cylinder lever lock (Z) and a profile cylinder lock (PZ1/PZ2) for locking the access panel.

Possible applications:

In installation shafts/walls with 25 mm planking on one side or 25 mm planking on both sides (partition walls / shaft walls / facing shells).

Dimensions:

The I30 fire protection access panel is available in the following standard sizes. Dimensions A and B are as follows:

- 200 x 200 mm
- 300 x 300 mm
- 400 x 400 mm
- 500 x 500 mm
- 600 x 600 mm
- tested up to 800 x 800 mm

Dimension D remains the same. Dimension C corresponds to the planking thickness.

Special designs:

Special dimensions can be produced in any desired size on request (minimum and maximum sizes see approval!).

Locks:

The access panel can be designed with the following lock types:

- FS** Square lock with white rosette
- Z** Round cylinder lever lock with key
- PZ** Profile cylinder lock with metal rosette

Special advantages of our system

- Inexpensive solution
- Short-term delivery possible
- Quick, trouble-free installation
- Technically mature solution
- Flush installation in shaft walls/front panels and partition walls
- Also suitable for tiling
- Can be installed in constructions from various system suppliers (see approval!)

Single-sided planking

Double-sided planking

Double-sided planking
partial reveal cladding



Watch installation
video



Watch installation
video



Watch installation
video