

Fire protection access panel

F5 - 60 System for installation shafts/walls

EI60

60 minutes
Fire protection

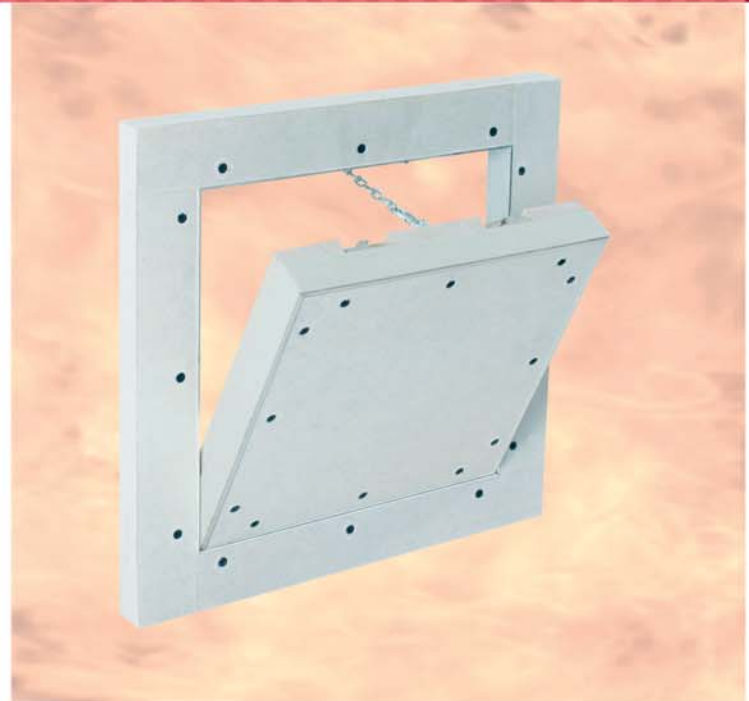


in accordance with EN 13501-2
(Classification from fire-resistance tests)

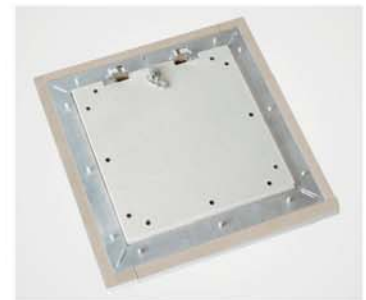
Product description:

The access panel is made of aluminium profiles with 30 mm (EI60) plasterboard inlay (GKF).

The two frames of the access panel each consist of four individual frame parts that are firmly connected to each other by a special welding process. The access panel is equipped with two catch guards. To avoid possible accidents, these must be re-hung after each opening of the door leaf. There is an air gap of 2.5 mm between the frame and the door leaf, which is provided with a circumferential fire protection seal (foaming). The concealed snap locks open the access panel when pressed.



The door leaf can be removed



Possible applications:

In installation shafts/walls with 30 mm planking on one side (shaft walls / facing shells)

Dimensions:

The fire protection access panel is available in the following standard sizes. Dimensions A and B are as follows:

- 200 x 200 mm
- 300 x 300 mm
- 400 x 400 mm
- 500 x 500 mm
- 600 x 600 mm
- tested up to 800 x 800 mm

Dimension D remains the same. Dimension C corresponds to the respective planking thickness.

Special designs:

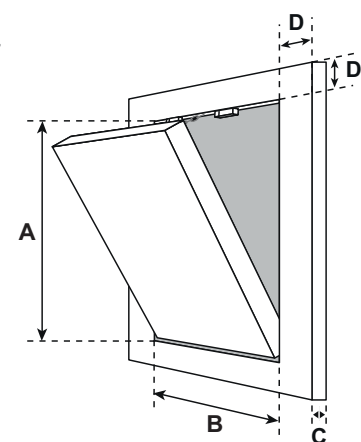
On request, special sizes can be produced in any desired size (for minimum and maximum sizes, see classification protocol).

Locks:

The access panel can be designed with the following lock types:

- FS** Square lock with white rosette
- Z** Round cylinder lever lock with key
- PZ** Profile cylinder lock with metal rosette

Example EI60
with 30 mm GKF



D = 55 mm

Special advantages of our system

- Inexpensive solution
- Short-term delivery possible
- Quick, trouble-free installation
- Technically mature solution
- Flush installation in installation walls/front panels
- Also suitable for tiling
- Can be installed in shaft walls from various system suppliers