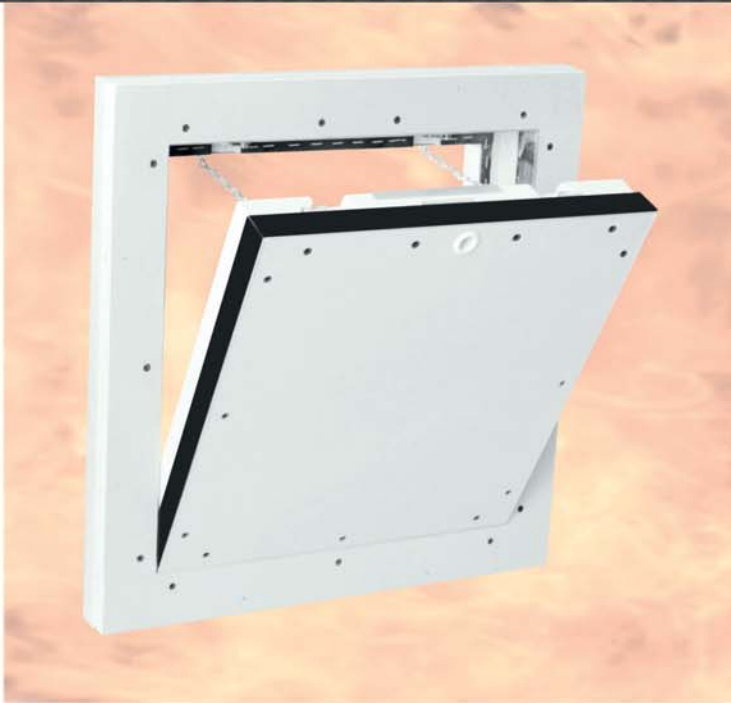


Fire protection access panel

F5 - 90 BMW System for solid walls

I90/EI90 - EI120

90 minutes
Fire protection



Fire protection: according to general building authority approval/general type approval: Z-6.55-2241

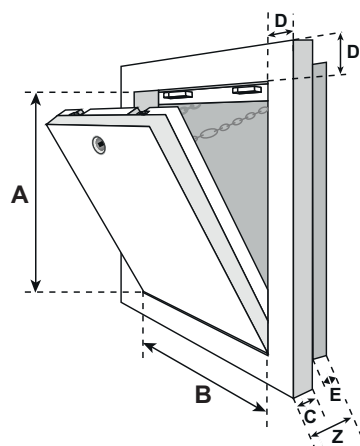


in accordance with EN 13501-2
(Classification from fire-resistance tests)

Product description: The access panel is made of aluminium profiles with 40 mm (I90) plasterboard inlay (GKF). The two frames of the access panel each consist of four individual frame parts that are firmly joined together by a special welding process. The fire protection doubling on the back achieves the required fire protection. The access panel is equipped with two safety catches. To avoid possible accidents, these must be re-hung after each opening of the door leaf. There is an air gap of 1.5 mm between the frame and



The door leaf can be removed



C = 40 mm
D = 57 mm
E = 40 mm
Z = total thickness = 80 mm

the door leaf, which is provided with a circumferential fire protection seal (foaming). You can choose between a square lock (FS), a round cylinder lever lock (Z) and a profile cylinder lock (PZ1/PZ2) for locking the access panel. The access panel can be fixed in the solid wall with the enclosed masonry brackets.

Possible applications:

- in solid walls
- for all suitable solid wall constructions

Dimensions:

The I90 fire protection access panel is available in the following standard sizes. Dimensions A and B are as follows:

- 200 x 200 mm
- 300 x 300 mm
- 400 x 400 mm
- 500 x 500 mm
- 600 x 600 mm
- tested up to W: 1000 x H: 1500 mm

Special designs:

Special dimensions can be produced in any desired size on request (minimum and maximum sizes see approval!).

Locks:

The access panel can be designed with the following lock types:

- FS** Square lock with white rosette
- Z** Round cylinder lever lock with key
- PZ** Profile cylinder lock with metal rosette

Special advantages of our system

- Inexpensive solution
- Short-term delivery possible
- Quick, trouble-free installation
- Technically mature solution
- Flush installation in solid walls
- Also suitable for tiling or plaster application



Watch installation video