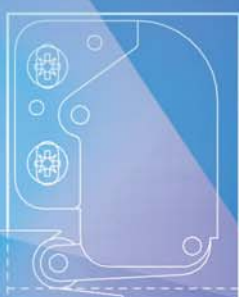




Product catalogue



FF Systembau
Access Panels

FF Systembau - Contact

GERMANY/AUSTRIA/ SWITZERLAND/BENELUX/ SCANDINAVIA/ESTONIA

Headquarter

FF Systembau GmbH

Hauptstraße 35
94439 Rossbach-Münchsdorf
Tel.: +49 (0) 8723 / 97 818 0
Fax: +49 (0) 8723 / 97 818 70
E-Mail: info@ffsystembau.de
www.ffsystembau.de

HUNGARY

FF Systembau magyarországi

Márkaképviselő
H-1185 Budapest, Üllői Út 626.
Tel.: +36 (0) 1 / 439 12 51, 439 12 52
Fax: +36 (0) 1 / 387 500 05
E-Mail: ihorvath@teteny-ker.hu
www.ffsystembau.hu

POLAND

FF Systems Sp. z o.o.

Ul. Zubrzyckiego 2c
26-600 Radom
Tel.: +48 (0) 48 / 366 42 25
Faks: +48 (0) 48 / 366 42 26
E-Mail: info@ffsystems.pl
www.ffsystems.pl

CZECH REPUBLIC/SLOVAKIA

FF Systembau s.r.o.

Lesná 945
966 01 Hliník nad Hronom
Tel.: +421 (0) 45 / 67 27 330
Fax: +421 (0) 45 / 67 27 334
E-Mail: info@ffsystembau.sk
www.ffsystembau.sk

FRANCE

FF Systembau

Hauptstrasse 35
94439 Rossbach-Münchsdorf
Tél.: +49 (0) 8723 / 97 818 65
Fax: +49 (0) 8723 / 97 818 85
E-Mail: info@ffsystems.fr
www.ffsystems.fr

ITALY/SPAIN

FF Systems srl

via Ca Bianca 36/5
21052 Busto Arsizio (VA)
Tel.: +39 0 331 / 18 520 02
Fax: +39 0 331 / 18 520 03
E-Mail: info@ffsystems.it
www.ffsystems.it

ROMANIA

FF SYSTEMBAU COMPANY S.R.L.

Str. Avram Iancu, nr. 25
Nădlac, jud. Arad
315 500
Tel: +40 (0) 257 / 473 409
Fax: +40 (0) 257 / 473 409
E-mail: info@ffsystembau.ro
www.ffsystembau.ro

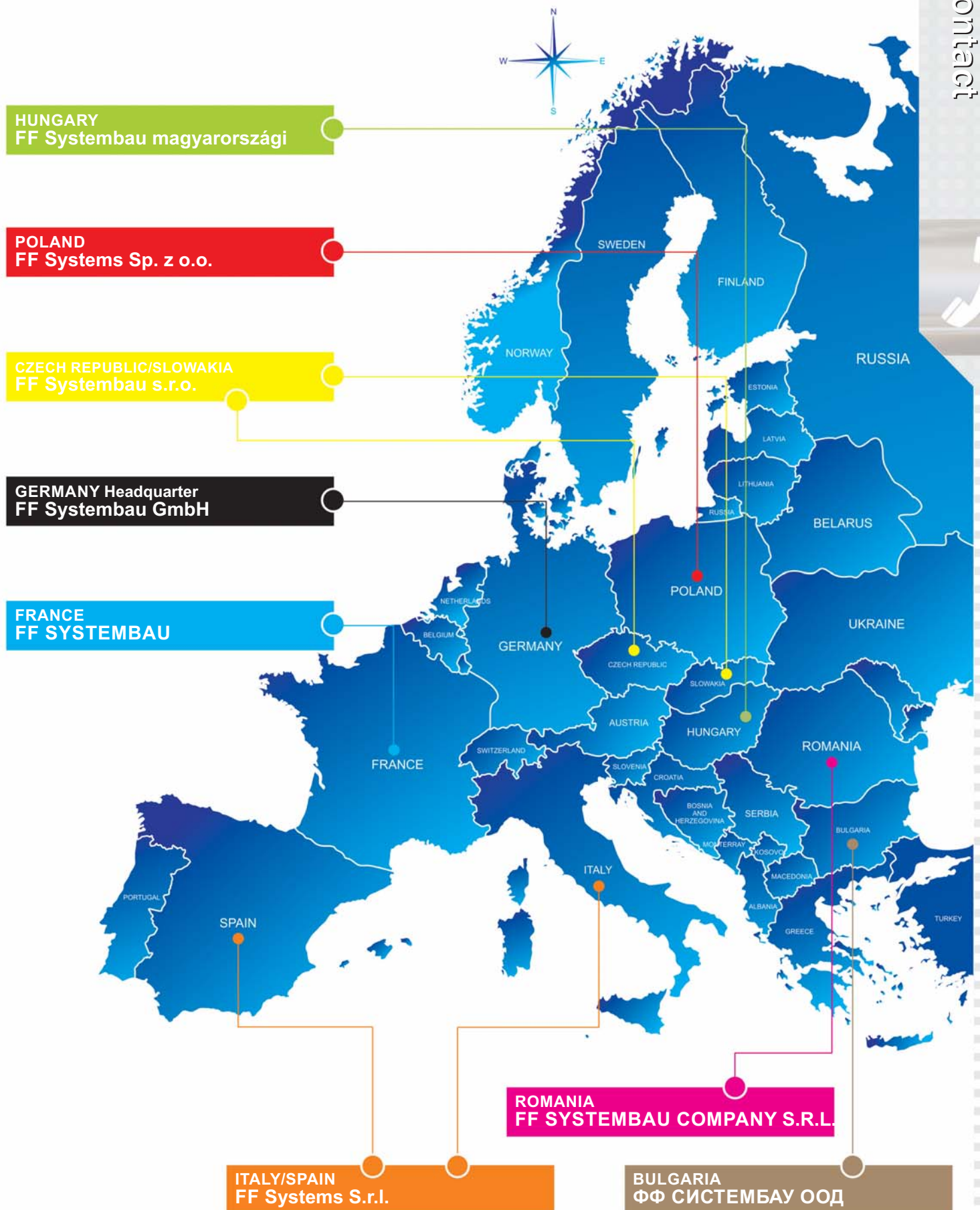
BULGARIA

ФФ СИСТЕМБАУ ООД

гр.София 1421, кв.Лозенец
ул."Деница" № 4
тел./факс: +359 (0) 2 / 866 23 04
E-mail: ffsysbau@abv.bg
www.ffsystembau.bg

FF Systembau - Contact

Contact



FF Systembau - the company

The company

Modern and experienced company

FF Systembau is one of the leading producers of access panels. Founded in 1991 the company's experience in the construction industry has greatly expanded its product lines to supply the market. In 2003 it has specialized in the manufacturing of access panels and doors.

Further companies have been established in Central, Eastern Europe and in the United States. With the headquarters located in Münchsdorf Germany our production and administration offices are also located on our 5.000 m² site.

The highest technical reliability of our products, as well as the highly qualified employees, guarantee the sustainable success of FF Systembau. At present, the company employs more than 150 members of staff.



Quality – consistent company policy

The highest product quality and absolute reliability of our products guarantee total confidence to the customer when installing our access panels. Therefore, FF Systembau has become a byword for quality management, and we strive to maintain a consistent company policy at all our subsidiaries. Every member of our staff loyally adheres to this policy, from the moment our raw materials are processed, to the delivery of the finished product. Furthermore, our dedicated and helpful advisors will give you all the advice and practical support you require.

Our ambition

It is our aim to reach the highest degree of customer satisfaction through variety and efficiency.

Versatile and innovative product range

Our unique range of products offers access panels in the widest selection of designs. Whether for ceilings or walls, the solid aluminium access panels, with or without plasterboard inlay, or the long-established sheet steel access panels, can be assembled flush.

Our products are readily installable without any difficulties. The access panels are available in many standard dimensions. Additionally, customized sizes can be manufactured to every requested dimension. This also applies to our fire resistant access panels. Different models are available, depending on purpose, and class of fire resistance required.

The product range is completed by access doors, which are produced in accordance with the customer's specifications.



Access panels without fire resistance

Without fire
resistance



Page 6

Aluminium panel non-removable

System F1



Page 7

Aluminium panel with removable hatch

System F2 Alu-Magic



Page 8

Aluminium panel with removable hatch/airtight

System F2 AKL



Page 9

Aluminium panel/ perforated plasterboard

Systems F1/F2



Page 10

Aluminium panel/ oversized multi- door

Systems F1/F2



Page 11

Aluminium panel with removable hatch/for tile applications

System F3



Page 12

Aluminium panel non-removable/ Jumbo door

System T



Page 13

Access panel alu round removable

System R



FF Systembau
Access Panels

Access panels non-removable

System F1 - Aluminium frame, with or without plasterboard inlay, for ceilings and drywall partitions

Description

The access panel consists of aluminium profiles, with or without plasterboard inlay GKBI from 10 mm to 25 mm and two latches.

Both, an outer and an inner frame of the access panel consist of four single frames, which are firmly connected due to a special welding process. For sizes from 300 x 300 mm, the access panel is equipped with a safety-system against accidental opening. In order to avoid accidents, this safety-system has to be secured after each opening. The access panel is easily installed in walls and ceilings.

A joint gap of 1.5 mm is visible between outer frame and door leaf. The concealed snap locks open the access panel when pressure is applied to the flap on the spring loaded latch side.



Ready-to-paint door leaf



Standard sizes for cladding of 12.5 mm

System F1	Dimensions in mm				
	A	B	C	D	E
200200G125	200	200	13	28	40
300300G125	300	300	13	28	40
400400G125	400	400	13	28	40
500500G125	500	500	13	28	40
600600G125	600	600	13	28	40

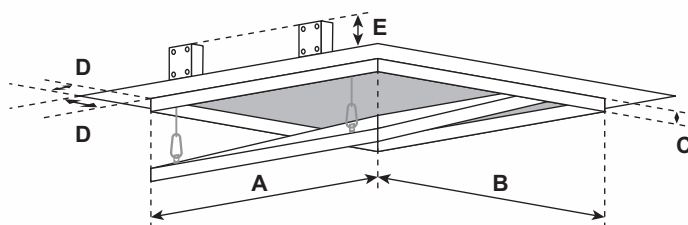
All standard sizes are available for cladding thicknesses from 10 mm to 25 mm. For further cladding thickness information, please do not hesitate to call us.

Locks

The access panel can be equipped with the following types of locks:

- FS** Four-square lock with white collar
- Z** Round-cylinder lock with key
- PZ** Profile cylinder lock with metal collar
- SD** Screwdriver operated cam latch
- H** Hex head cam latch
- P** Pinned hex head cam latch

Additionally, the screwed models as well as the aluminium frame models are available.



Customized solutions

Customized sizes can be produced in every dimension upon enquiry.

Particular advantages of our system

- Economical solution
- Delivery at short notice on request
- Quick and easy installation
- Solid aluminium frame
- Sophisticated solution
- Flush installation in ceilings and drywall partitions
- Also applicable to perforated gypsum board
- Superior protection from damage or loss, as the hatch is firmly connected to the outer frame
- Lateral opening is possible in wall areas
- Ready-to-paint door leaf

FF Systembau
Access Panels

Access panel removable

System F2 Alu-Magic-Aluminium frame, with or without plasterboard inlay, for ceilings and drywall partitions

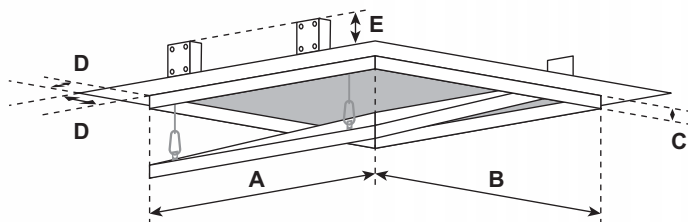
Alu-Magic



Description

The access panel consists of aluminium profiles, with or without plasterboard inlay GKBI from 10 mm to 25 mm and two latches.

Both, an outer and an inner frame of the access panel consist of four single frames, which are firmly connected due to a special welding process. For sizes from 300 x 300 mm, the access panel is equipped with a safety-system against accidental opening. In order to avoid accidents, this safety-system has to be secured after each opening. The access panel is easily installed in walls and ceilings. A joint gap of 1.5 mm is visible between outer frame and door leaf, which is equipped with a circumferential joint. The concealed snap locks open the access panel when pressure is applied to the flap on the spring loaded latch side.



Customized solutions

Customized sizes can be produced in every dimension upon enquiry.

Particular advantages of our system

- Economical solution
- Delivery at short notice on request
- Quick and easy installation
- Solid aluminium frame
- Sophisticated solution
- Flush installation in ceilings and drywall partitions
- Ready-to-paint door leaf
- Also applicable to perforated gypsum board

Standard sizes for cladding of 12.5 mm

System F2	Dimensions in mm				
	A	B	C	D	E
AK200200G125	200	200	13	28	40
AK300300G125	300	300	13	28	40
AK400400G125	400	400	13	28	40
AK500500G125	500	500	13	28	40
AK600600G125	600	600	13	28	40

All standard sizes are available for cladding thicknesses from 10 mm to 25 mm. For other cladding thicknesses, please do not hesitate to contact us.

Locks

The access panel can be equipped with the following types of locks:

- FS** Four-square lock with white collar
- Z** Round-cylinder lock with key
- PZ** Profile cylinder lock with metal collar
- SD** Screwdriver operated cam latch
- H** Hex head cam latch
- P** Pinned hex head cam latch

Additionally, the screwed models as well as the aluminium frame models are available.

Access panel 'airtight and dust-proof'

System F2 AKL - Aluminium frame, with plasterboard inlay, for ceilings and drywall partitions

Airtight and dust-proof

Description

The access panel consists of aluminium profiles, with plasterboard inlay GKBI from 12.5 mm to 25 mm and two latches.

Both, an outer and an inner frame of the access panel consist of four single frames, which are firmly connected due to a special welding process. The access panel is equipped with a catchwire. In order to avoid accidents, this safety-system has to be secured after each opening.

The access panel is readily installable in walls and ceilings. A joint gap of 2.5 mm is visible between outer frame and door leaf, which is equipped with an innovative brush joint. The concealed snap locks open the access panel when pressure is applied to the flap on the spring loaded latch side.

NEW: Smoke-proof version also available! Please ask for it!



Standard sizes for plasterboard inlay 12.5 mm

System F2	Dimensions in mm				
	A	B	C	D	E
AKL200200G125	200	200	13	28	40
AKL300300G125	300	300	13	28	40
AKL400400G125	400	400	13	28	40
AKL500500G125	500	500	13	28	40
AKL600600G125	600	600	13	28	40

All standard sizes are available for cladding thicknesses from 12.5 mm to 25 mm.

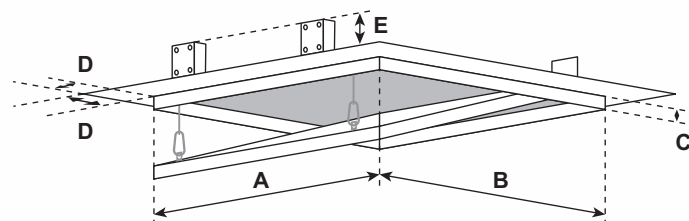
For other cladding thicknesses, please do not hesitate to contact us.

Tested up to 1000 x 1000 mm

Locks

The access panel can be equipped with the following types of locks:

- FS** Four-square lock with white collar
- Z** Round-cylinder lock with key
- PZ** Profile cylinder lock with metal collar



Customized solutions

Customized sizes can be produced in every dimension upon enquiry.

Particular advantages of our system

- Economical solution
- Delivery at short notice on request
- Quick and easy installation
- Also tested with locks
- Sophisticated solution
- Flush installation in ceilings and drywall partitions
- Validated 'airtight and dust-proof':
Test report Nr. 106 34533 (ift Rosenheim)

FF Systembau
Access Panels

Access panel with perforated board

System F1/F2 - Aluminium frame, with plasterboard

With
perforated board

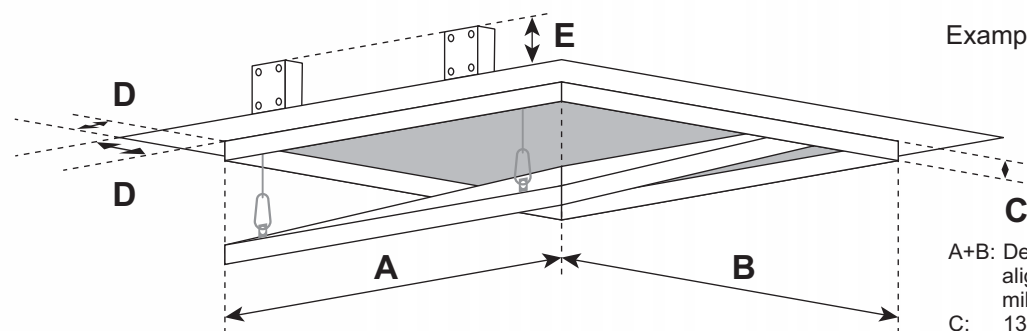
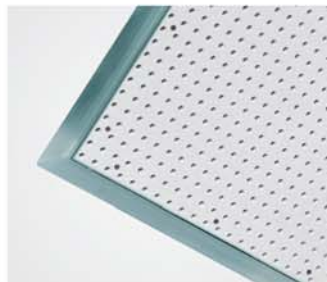
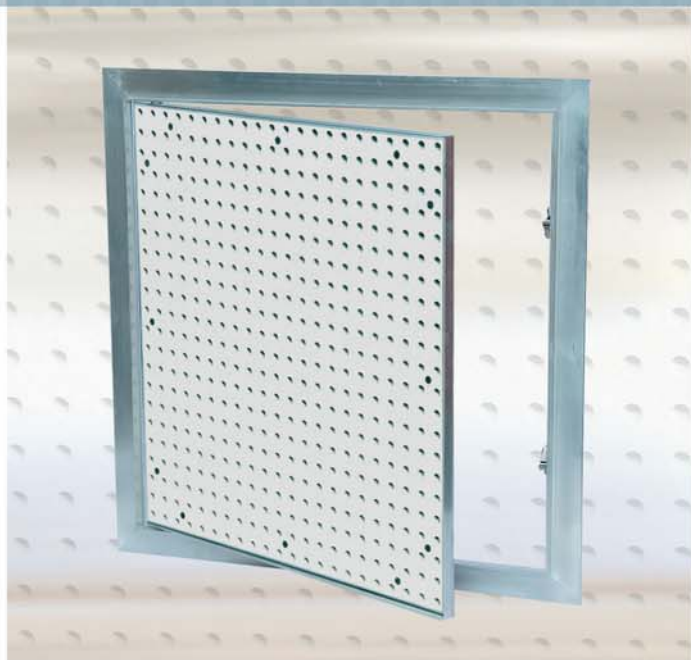
Description

The access panel consists of aluminium profiles with perforated plasterboard inlay 12.5 mm or 10 mm and two latches.

Both outer and inner frame of the access panel consist of four single frames, which are firmly connected due to a special welding process. From 300 x 300 mm, the access panel is equipped with a catchwire. In order to avoid accidents, this safety-system has to be secured after each opening.

A joint gap of 0.5 mm is visible between outer frame and door leaf. The concealed snap locks open the access panel when pressure is applied to the flap on the spring loaded latch side.

All common perforations can be installed.



Example with 12.5 mm perforated board

Customized solutions

Customized sizes can be produced in every dimension upon enquiry.

A+B: Depending on type of perforation. It is aligned to the existing perforation with millimetre accuracy.

C: 13 mm
D: 28 mm
E: 40 mm

Particular advantages of our system

- Economical solution
- Delivery at short notice on request
- Quick and easy installation
- Solid aluminium frame
- Sophisticated solution
- Flush installation in ceilings with perforated board
- Fits in exactly with the existing perforation pattern
- No time-consuming adjustments at the building site necessary

Locks

The access panel can be equipped with the following types of locks:

- FS** Four-square lock with white collar
- Z** Round-cylinder lock with key
- PZ** Profile cylinder lock with metal collar
- SD** Screwdriver operated cam latch
- H** Hex head cam latch
- P** Pinned hex head cam latch

Access panel with oversized multi-door

System F1/F2 oversized multi-door - Aluminium frame, with plasterboard inlay, for drywall applications

Description

The access panel consists of aluminium profiles, with plasterboard inlay GKBI from 12.5 mm to 25 mm and two latches.

Both, an outer and an inner frame of the access panel consist of four single frames, which are firmly connected due to a special welding process. The access panel is equipped with a safety-system against accidental opening. In order to avoid accidents, this safety-system has to be secured after each opening.

A joint gap of 1.5 mm is visible between outer frame and door leaf. The concealed snap locks open the access panel when pressure is applied to the flap on the spring loaded latch side.

This access panel is designed with a double door to create a large clear span opening.



Dimensions

These panels are customizations, produced exactly to dimensions given by the customer.

Locks

The access panel can be equipped with the following types of locks:

- FS** Four-square lock with white collar
- Z** Round-cylinder lock with key
- PZ** Profile cylinder lock with metal collar
- SD** Screwdriver operated cam latch
- H** Hex head cam latch
- P** Pinned hex head cam latch

Capabilities

In non-load bearing interior plasterboard ceilings and walls.

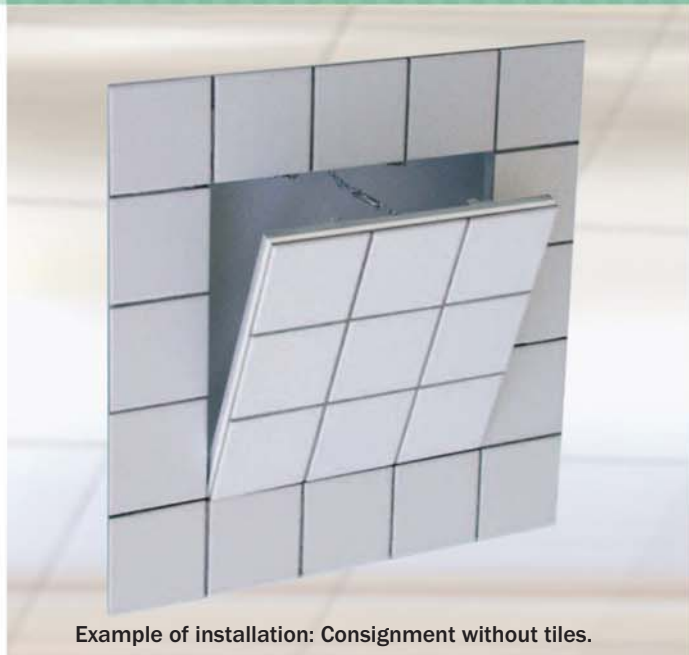
Particular advantages of our system

- Superior engineering & innovative design
- Fast delivery
- Quick and easy installation
- Solid aluminium frame
- Flush installation in ceilings and walls
- Full clear opening despite oversize

Access panel for tiling

System F3 - Aluminium frame, with plasterboard inlay, for drywall partitions

For tiling



Example of installation: Consignment without tiles.

Description

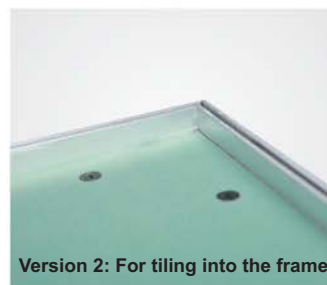
The access panel consists of aluminium profiles, with plasterboard inlay GKBI 12.5 mm, 15 mm or 25 mm and two latches.

Both, an outer and an inner frame of the access panel consist of four single frames, which are firmly connected due to a special welding process. The access panel is equipped with a catchwire. In order to avoid accidents, this safety-system has to be secured after each opening.

The access panel is readily installable in walls. A joint gap of 3 mm (version 1) or 1.5 mm (version 2) is visible between outer frame and door leaf, which is equipped with a circumferential joint. The concealed snap locks open the access panel when pressure is applied to the flap on the spring loaded latch side.



Version 1: For tiling the door leaf



Version 2: For tiling into the frame



Dimensions

The access panel is aligned to the grid dimension of the tiles. Information on the dimensions of the tiles and joint gaps is required, from which dimensions A and B can be ascertained.

Dimensions D and E remain constant. Dimension C corresponds to the respective cladding thicknesses.

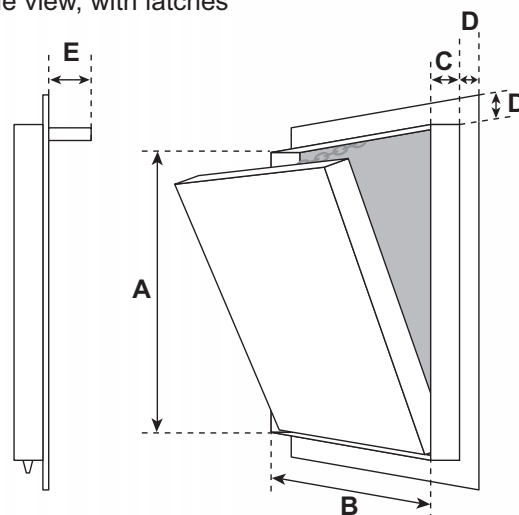
Versions

■ **For “tiling the door leaf”:** The aluminium profile is flush with the board GKBI. The tiles are placed upon the profile.

■ **For “tiling into the frame”:** The aluminium profile is higher than the board GKBI. The tiles are placed into the frame.

Advantages: - easier assembly for the tiler
- clean circumferential border

Left picture:
Closed side view, with latches



D = 28 mm
E = 40 mm

All standard sizes are available for cladding thicknesses of 12.5 mm, 15 mm or 25 mm.

For other cladding thicknesses, please do not hesitate to call us.

Dimensions

These panels are customizations, produced exactly to dimensions given by the customer.

Particular advantages of our system

- Economical solution
- Delivery at short notice on request
- Quick and easy installation
- Solid aluminium frame
- Sophisticated solution
- Flush installation in drywall partitions

Jumbo door

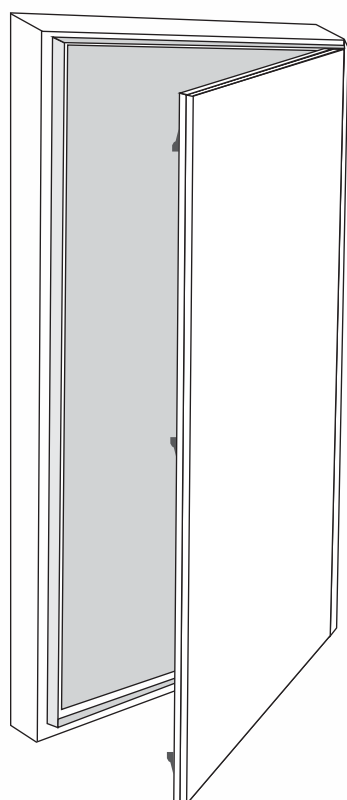
System T for oversizes

Description

This access panel consists of welded aluminium frame and is strengthened with aluminium square tubing. This reinforced square tubing allows for one large door. The door is non-removable.

The reveal of 1.5 mm is visible between the outer frame and door hatch. The concealed snap locks open the access panel when pressure is applied to the spring loaded latch side.

This access panel is designed for larger openings that require one door.



Capabilities

Jumbo doors can be installed in plasterboard walls with a thickness from 12.5 to 25 mm.

Dimensions

These panels are customizations, produced exactly to dimensions given by the customer.

Locks

The Jumbo door can be equipped with the following types of locks:

- FS** Four-square lock with white collar
- Z** Round-cylinder lock with key
- PZ** Profile cylinder lock with metal collar

Particular advantages of our system

- Superior engineering & innovative design
- Fast delivery
- Quick and easy installation
- Solid aluminium frame
- Flush installation in ceilings and walls
- Lateral opening

Access panel round removable

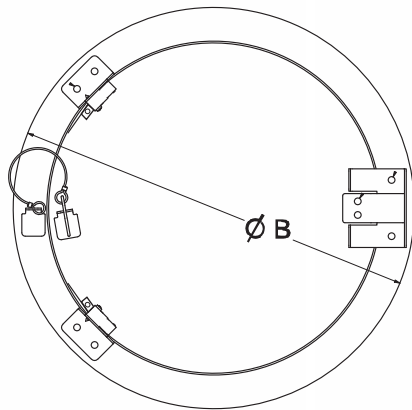
System R - round access panel with plasterboard inlay, removable



Description

The round access panel consists of an aluminium frame with plasterboard inlay 12,5 mm and latches.

The access panel is equipped with a safety-system against accidental opening. In order to avoid accidents, this safety-system has to be secured after each opening. The access panel is easily installed in walls and ceilings. A joint gap of 1.5 mm is visible between outer frame and door leaf, which is equipped with a circumferential sealing strip. The concealed snap locks open the access panel when pressure is applied to the flap on the spring loaded latch side.

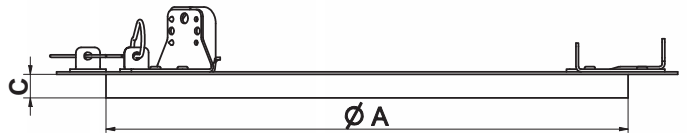


Standard sizes for plasterboard inlay 12.5 mm

System R	Dimensions in mm	
	A	B
R200G125	200	260
R300G125	300	360
R400G125	400	460
R500G125	500	560
R600G125	600	660

All standard sizes are available for cladding thickness 12.5 mm.

Cladding thicknesses 15 mm, 18 mm and 20 mm are also available (special fabrication)!



Particular advantages of our system

- Economical solution
- Fast delivery
- Quick and easy installation
- Solid aluminium frame
- Superior engineering & innovative design
- Flush installation in drywall ceilings and walls
- Also applicable to perforated gypsum boards

Locks

The access panel can be equipped with the following types of locks:

- FS** Four-square lock with white collar
- Z** Round-cylinder lock with key
- PZ** Profile cylinder lock with metal collar

Access panels fire resistance

Fire resistance



Page 15

Access panel fire resistance EI30/EI60/EI90/ EI120

for drywall partitions
System F4
EI30/EI60/EI90/EI120



Page 16

Access panel fire resistance EI30

for shaft walls
System F5 - 30



Page 17

Access panel fire resistance EI60

for shaft walls
System F5 - 60



Page 18

Access panel fire resistance EI90

for shaft walls
System F5 - 90



Page 19

Access panel fire resistance EI120

for shaft walls
System F5 - 120



Page 20

Access panel fire resistance EI30

for ceilings
System F6 - 30



Page 21

Access panel fire resistance EI60

for ceilings
System F6 - 60



Page 22

Access panel fire resistance EI90

for ceilings
System F6 - 90



Page 23

Access panel fire resistance EI120

for ceilings
System F6 - 120

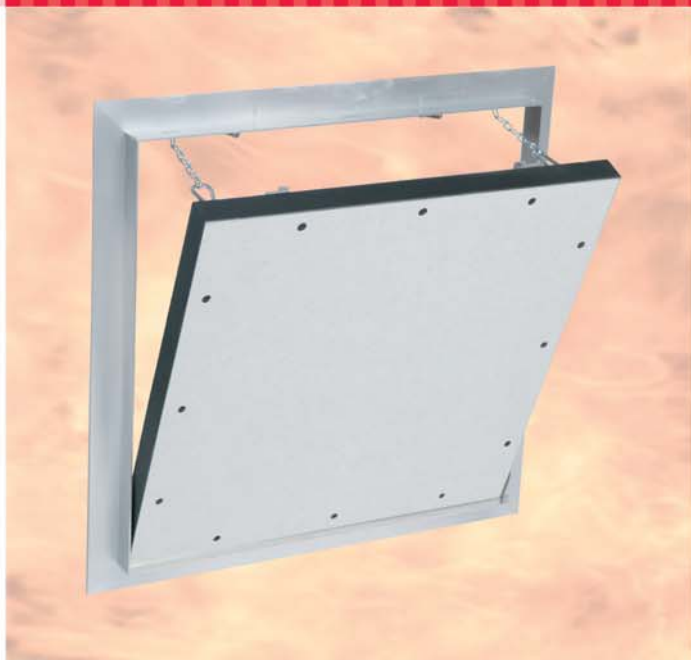


FF Systembau
Access Panels

Access panel fire resistance EI30/EI60/EI90/EI120

System F4 - For drywall partitions

Fire resistance

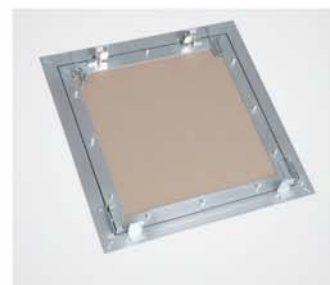


Description

The access panel consists of aluminium profiles, with plasterboard inlay GKF 12.5 mm (EI30) or 25 mm (EI120/EI90/EI60/EI30) and two latches.

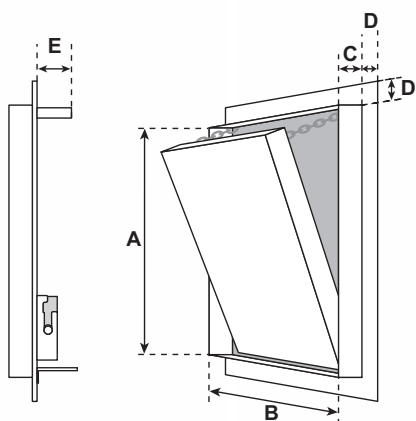
Both, an outer and an inner frame of the access panel consist of four single frames, which are firmly connected due to a special welding process. The access panel is equipped with two catchwires. In order to avoid accidents, this safety-system has to be secured after each opening.

A joint gap of 1.5 mm is visible between outer frame and door leaf, which is equipped with a circumferential fire-resistant seal (foaming). The concealed snap locks open the access panel when pressure is applied to the flap on the spring loaded latch side.



Removable hatch

Left picture:
side view
closed,
with latches



D = 28 mm
E = 40 mm

All dimensions are available for cladding thicknesses of 12.5 mm (EI30) and 25 mm (EI60/EI90/EI120). EI60/EI90/EI120 is also applicable to EI30-partitions with cladding of 2 x 12.5 mm.

Particular advantages of our system

- Economical solution
- Delivery at short notice on request
- Quick and easy installation
- Solid aluminium frame
- Sophisticated solution
- Flush installation in drywall partitions

Capabilities

In non-load bearing, room-enclosing stud walls of the fire resistance class:

- EI30 with double layer cladding 12.5 mm
- EI30/EI60/EI90/EI120 with double layer cladding 2 x 12.5 mm

Tested in accordance with the "European Norms EN 1364-1, EN 1634-1 and EN 1634-3".

Dimensions

The access panel fire resistance is available in the following standard sizes. Dimensions A and B as follows:

- 200 x 200 mm
- 300 x 300 mm
- 400 x 400 mm
- 500 x 500 mm
- 600 x 600 mm
- tested up to 1000 x 1000 mm

Dimensions D and E remain constant. Dimension C corresponds to the respective cladding thicknesses.

Customized solutions

Customized sizes can be produced in every dimension upon enquiry.

Locks

The access panel can be equipped with the following types of locks:

- FS** Four-square lock with white collar
- Z** Round-cylinder lock with key
- PZ** Profile cylinder lock with metal collar

Access panel fire resistance

EI30

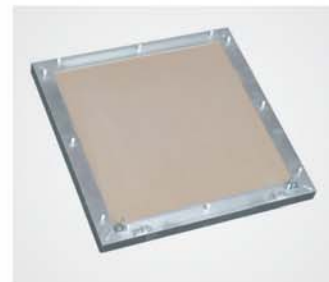
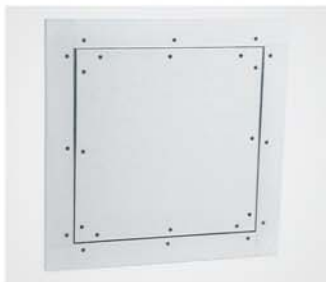
System F5 - 30 - For shaft walls

Description

The access panel consists of aluminium profiles with plasterboard inlay GKF 25 mm (EI30).

Both, an outer and an inner frame of the access panel consist of four single frames, which are firmly connected due to a special welding process. The access panel is equipped with two catchwires. In order to avoid accidents, this safety-system has to be secured after each opening.

A joint gap of 1.5 mm is visible between outer frame and door leaf, which is equipped with a circumferential fire-resistant seal (foaming). The concealed snap locks open the access panel when pressure is applied to the flap on the spring loaded latch side.



Capabilities

In non-load bearing shaft walls of the fire resistance class EI30 with single-side cladding 25 mm.

Tested in accordance with the "European Norms EN 1634-1 and EN 1634-3".

Dimensions

The access panel fire resistance is available in the following standard sizes. Dimensions A and B as follows:

- 200 x 200 mm
- 300 x 300 mm
- 400 x 400 mm
- 500 x 500 mm
- 600 x 600 mm
- tested up to 800 x 800 mm

Dimension D remains constant. Dimension C corresponds to the cladding thickness.

Customized solutions

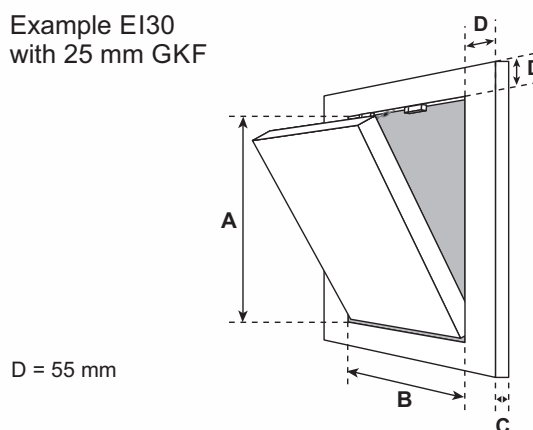
Customized sizes can be produced in every dimension upon enquiry.

Locks

The access panel can be equipped with the following types of locks:

- FS** Four-square lock with white collar
- Z** Round-cylinder lock with key
- PZ** Profile cylinder lock with metal collar

Example EI30 with 25 mm GKF



Particular advantages of our system

- Economical solution
- Delivery at short notice on request
- Quick and easy installation
- Sophisticated solution
- Flush installation in shaft walls
- Also suitable for tiling
- Installation possible in shaft walls of different producers

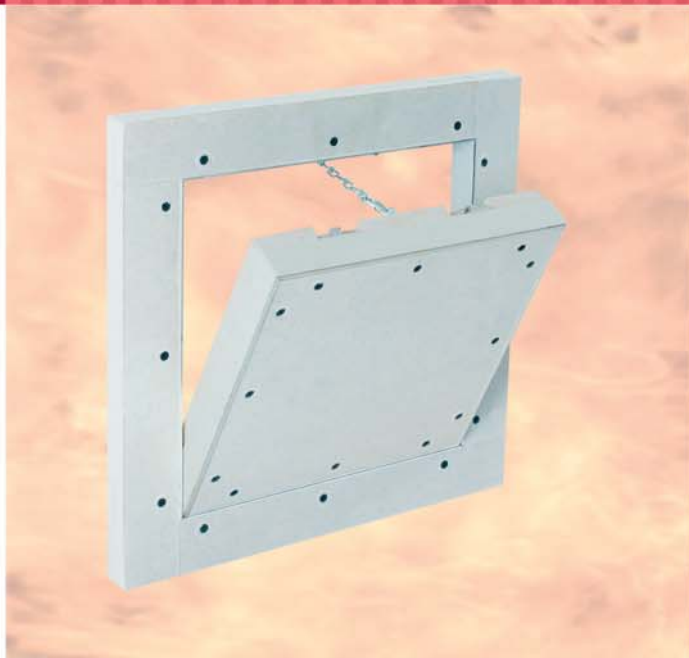
FF Systembau
Access Panels

Access panel fire resistance

System F5 - 60 - For shaft walls

EI60

Fire resistance



Description

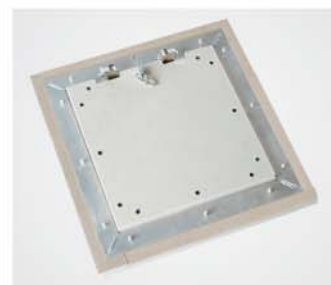
The access panel consists of aluminium profiles with plasterboard inlay GKF 30 mm (EI60).

Both outer and inner frame of the access panel consist of four single frames, which are firmly connected due to a special welding process. The access panel is equipped with two catchwires. In order to avoid accidents, this safety-system has to be secured after each opening.

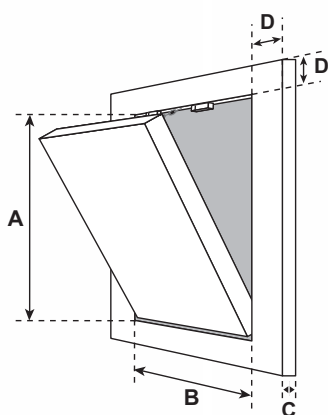
A joint gap of 2.5 mm is visible between outer frame and door leaf, which is equipped with a circumferential fire-resistant seal (foaming). The concealed snap locks open the access panel when pressure is applied to the flap on the spring loaded latch side.



Removable hatch



Example EI60
with 30 mm GKF



D = 55 mm

Capabilities

In non-bearing shaft walls/insulation panels of the fire resistance class EI60 with single-side cladding 30 mm.

Tested in accordance with the "European Norms EN 1634-1 and EN 1634-3".

Dimensions

The access panel fire resistance is available in the following standard sizes:

- 200 x 200 mm
- 300 x 300 mm
- 400 x 400 mm
- 500 x 500 mm
- 600 x 600 mm
- tested up to 800 x 800 mm

Customized solutions

Customized sizes can be produced in every dimension upon enquiry.

Locks

The access panel can be equipped with the following types of locks:

- FS** Four-square lock with white collar
- Z** Round-cylinder lock with key
- PZ** Profile cylinder lock with metal collar

Particular advantages of our system

- Economical solution
- Delivery at short notice on request
- Quick and easy installation
- Sophisticated solution
- Flush installation in shaft walls/insulation panel
- Also suitable for tiling
- Installation possible in shaft walls of different producers

Access panel fire resistance

System F5 - 90 - For shaft walls

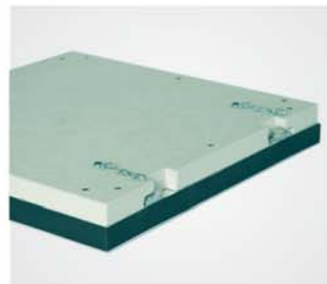
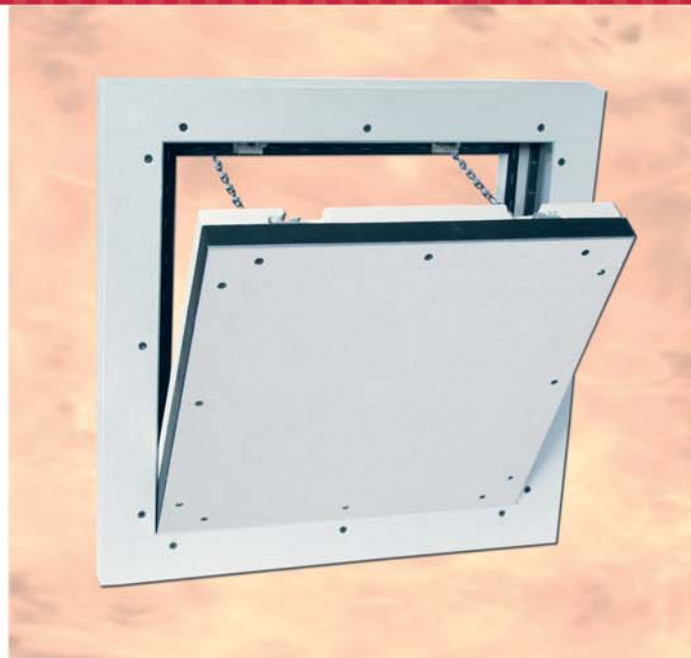
EI90

Description

The access panel consists of aluminium profiles with plasterboard inlay GKF 40 mm, 45 mm or 50 mm (EI90).

Both, an outer and an inner frame of the access panel consist of four single frames, which are firmly connected due to a special welding process. The fire-resistant double-layer cladding on the reverse side meets the required fire resistance standard. The access panel is equipped with two catchwires. In order to avoid accidents, this safety-system has to be secured after each opening.

A joint gap of 1.5 mm is visible between outer frame and door leaf, which is equipped with a circumferential fire-resistant seal (foaming). The concealed snap locks open the access panel when pressure is applied to the flap on the spring loaded latch side.



Capabilities

In non-bearing shaft walls of the fire resistance class EI90:

- with single-side cladding 40 mm
- with single-side cladding 45 mm
- with single-side cladding 50 mm

Tested in accordance with the "European Norms EN 1634-1 and EN 1634-3".

Dimensions

The access panel fire resistance is available in the following standard sizes. Dimensions A and B as follows:

- 200 x 200 mm
- 300 x 300 mm
- 400 x 400 mm
- 500 x 500 mm
- 600 x 600 mm
- tested up to H: 1500 x B: 1000 mm

The clearance is smaller by 50 mm each.

Customized solutions

Customized sizes can be produced in every dimension upon enquiry.

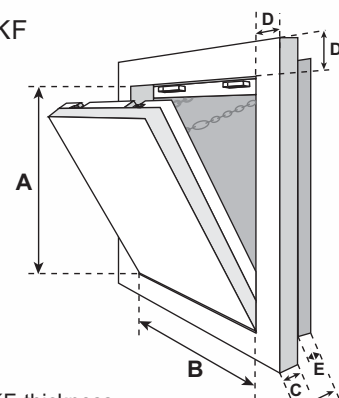
Locks

The access panel can be equipped with the following types of locks:

- FS** Four-square lock with white collar
- Z** Round-cylinder lock with key
- PZ** Profile cylinder lock with metal collar

Example EI90 with 40 mm GKF

D = 55 mm
 E = variable dimensions:
 EI90 with 40 mm GKF = 40 mm
 EI90 with 45 mm GKF = 35 mm
 EI90 with 50 mm GKF = 30 mm
 Z = total thickness = 80 mm



Dimension D remains constant.
 Dimension E varies according to GKF-thickness.
 Dimension C corresponds to the respective cladding thicknesses.

Particular advantages of our system

- Economical solution
- Delivery at short notice on request
- Quick and easy installation
- Sophisticated solution
- Flush installation in shaft walls
- Also suitable for tiling
- Installation possible in shaft walls of different producers

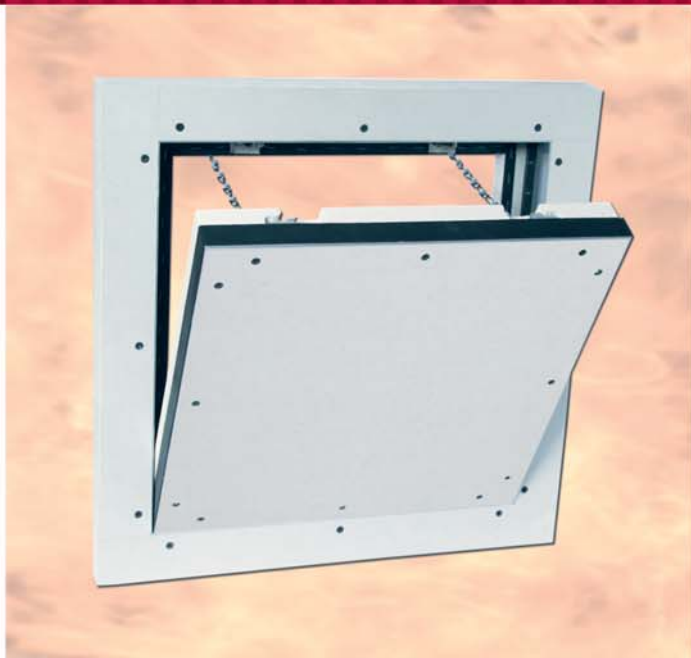
FF Systembau
Access Panels

Access panel fire resistance

System F5 - 120 - For shaft walls

EI120

Fire resistance



Description

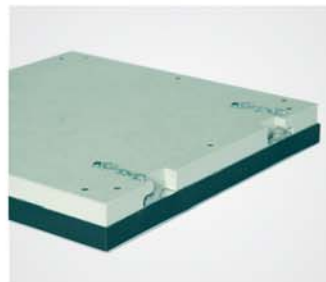
The access panel consists of aluminium profiles with plasterboard inlay GKF 40 mm, 45 mm or 50 mm (EI120).

Both outer and inner frame of the access panel consist of four single frames, which are firmly connected due to a special welding process. The fire-resistant double-layer on the reverse side meets the required fire resistance class. The access panel is equipped with two catchwires.

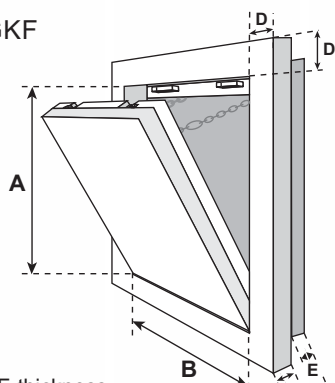
A joint gap of 1.5 mm is visible between outer frame and door leaf, which is equipped with a circumferential fire-resistant seal (foaming). The concealed snap locks open the access panel when pressure is applied to the flap on the spring loaded latch side.



Removable hatch



Example EI120 with 40 mm GKF



D = 55 mm

E = variable dimensions:

EI120 with 40 mm GKF = 40 mm

EI120 with 45 mm GKF = 35 mm

EI120 with 50 mm GKF = 30 mm

Dimension D remains constant.

Dimension E varies according to GKF-thickness.

Dimension C corresponds to the respective cladding thicknesses.

Capabilities

In non-bearing shaft walls/insulation panels of the fire resistance class EI120:

- with single-side cladding 40 mm
- with single-side cladding 45 mm
- with single-side cladding 50 mm

Tested in accordance with the "European Norms EN 1634-1 and EN 1634-3".

Dimensions

The access panel fire resistance is available in the following standard sizes. Dimensions A and B as follows

- 200 x 200 mm
- 300 x 300 mm
- 400 x 400 mm
- 500 x 500 mm
- 600 x 600 mm
- tested up to H: 1500 x B: 1000 mm

Customized solutions

Customized sizes can be produced in every dimension upon enquiry.

Locks

The access panel can be equipped with the following types of locks:

FS Four-square lock with white collar

Particular advantages of our system

- Economical solution
- Delivery at short notice on request
- Quick and easy installation
- Sophisticated solution
- Flush installation in shaft walls/insulation panel
- Also suitable for tiling
- Installation possible in shaft walls of different producers

Access panel fire resistance

EI30

System F6 - 30 - For ceilings

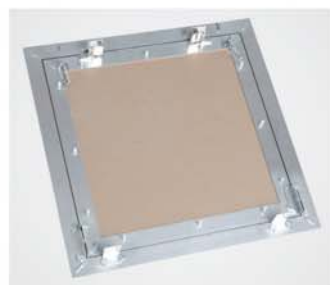
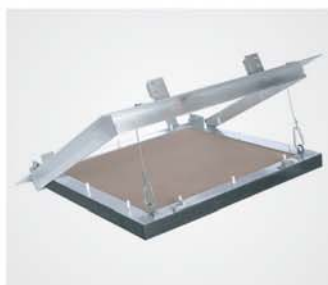
Description

The access panel consists of aluminium profiles with plasterboard inlay GKF 12.5 mm, 15 mm, 18 mm, 20 mm or 25 mm (EI30).

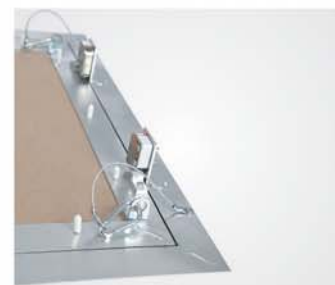
Both, an outer and an inner frame of the access panel consist of four single frames, which are firmly connected due to a special welding process. The access panel is equipped with two catchwires. In order to avoid accidents, this safety-system has to be secured after each opening.

A joint gap of 1.5 mm is visible between outer frame and door leaf, which is equipped with a circumferential fire-resistant seal (foaming). The concealed snap locks open the access panel when pressure is applied to the flap on the spring loaded latch side.

**WITHOUT FIRE-RESISTANT LAYER
ON THE REVERSE SIDE!**



Removable hatch



Capabilities

In non-load bearing ceilings of the fire resistance class:

- EI30 with cladding of 12.5 mm, 15 mm, 18 mm, 20 mm or 25 mm

Tested in accordance with the "European Norms EN 1364-2 and EN 1634-3".

Dimensions

The access panel fire resistance is available in the following standard sizes. Dimensions A and B as follows:

- 200 x 200 mm
- 300 x 300 mm
- 400 x 400 mm
- 500 x 500 mm
- 600 x 600 mm
- tested up to 800 x 800 mm

Dimensions D and E remain constant. Dimension C corresponds to the respective cladding thicknesses.

Customized solutions

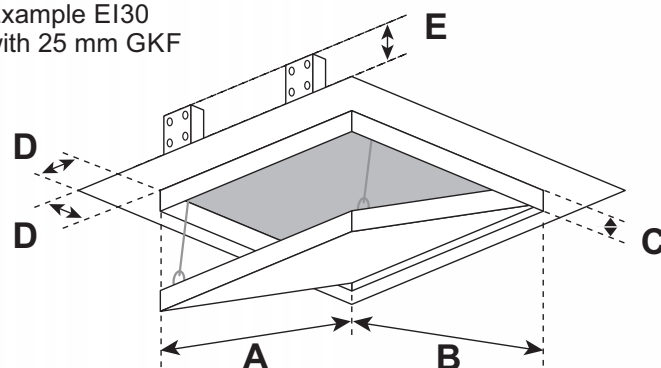
Customized sizes can be produced in every dimension upon enquiry.

Locks

The access panel can be equipped with the following types of locks:

- FS** Four-square lock with white collar
- Z** Round-cylinder lock with key
- PZ** Profile cylinder lock with metal collar

Example EI30
with 25 mm GKF



D = 28 mm

E = 40 mm

All dimensions are available for cladding thicknesses of 12.5 mm, 15 mm, 18 mm, 20 mm or 25 mm (EI30).

Particular advantages of our system

- Economical solution
- Delivery at short notice on request
- Quick and easy installation
- Sophisticated solution
- Flush installation in ceilings

FF Systembau
Access Panels

Access panel fire resistance

System F6 - 60 - For ceilings

EI60

Fire resistance



Description

The access panel consists of aluminium profiles with plasterboard inlay Fireboard 30 mm (2 x 15 mm).

Both outer and inner frame of the access panel consist of four single frames, which are firmly connected due to a special welding process.

The access panel is equipped with a catchwire. In order to avoid accidents, this safety-system has to be secured after each opening.

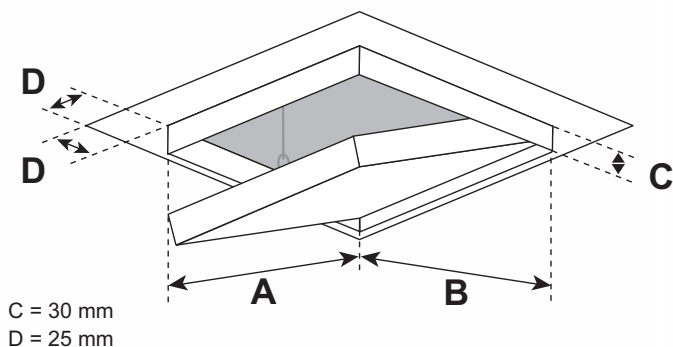
A joint gap of 2.5 mm is visible between outer frame and door leaf, which is equipped with a circumferential fire-resistant seal (foaming). The concealed snap locks open the access panel when pressure is applied to the flap on the spring loaded latch side.



Removable hatch



Example EI60 with 30 mm Fireboard



Capabilities

In non-bearing plasterboard ceilings of the fire resistance class EI60.

Tested in accordance with the "European Norms EN 1364-2 and EN 1634-3".

Dimensions

The access panel fire resistance is available in the following standard sizes. Dimensions A and B as follows:

- 200 x 200 mm
- 300 x 300 mm
- 400 x 400 mm
- 500 x 500 mm
- 600 x 600 mm
- tested up to 800 x 800 mm

Customized solutions

Customized sizes can be produced in every dimension upon enquiry.

Locks

The access panel can be equipped with the following types of locks:

- FS** Four-square lock with white collar
- Z** Round-cylinder lock with key
- PZ** Profile cylinder lock with metal collar

Particular advantages of our system

- Economical solution
- Delivery at short notice on request
- Quick and easy installation
- Sophisticated solution
- Flush installation in plasterboard ceilings
- Fire-resistant layer on the reverse side is no longer necessary

Access panel fire resistance

EI90

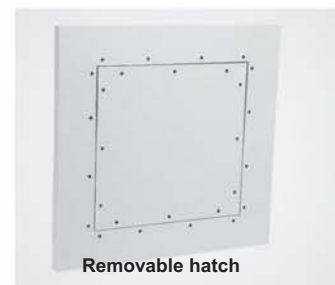
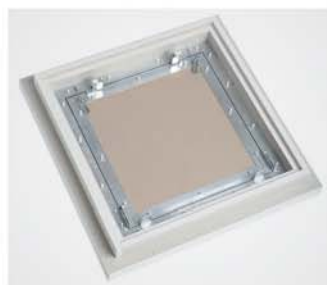
System F6 - 90 - For ceilings

Description

The access panel consists of aluminium profiles with plasterboard inlay GKF 40 mm, 43 mm, 45 mm or 50 mm.

Both, an outer and an inner frame of the access panel consist of four single frames, which are firmly connected due to a special welding process.

The fire-resistant double-layer cladding on the reverse side meets the required fire resistance standard. The access panel is equipped with two catchwires. In order to avoid accidents, this safety-system has to be secured after each opening. A joint gap of 1.5 mm is visible between outer frame and door leaf, which is equipped with a circumferential fire-resistant seal (foaming). The concealed snap locks open the access panel when pressure is applied to the flap on the spring loaded latch side.



Removable hatch

Capabilities

In non-load bearing ceilings of the fire resistance class:

- EI90 with cladding of 40 mm
- EI90 with cladding of 43 mm
- EI90 with cladding of 45 mm
- EI90 with cladding of 50 mm

Tested in accordance with the "European Norms EN 1364-2 and EN 1634-3".

Dimensions

The access panel fire resistance is available in the following standard sizes. Dimensions A and B as follows:

- 200 x 200 mm
- 300 x 300 mm
- 400 x 400 mm
- 500 x 500 mm
- 600 x 600 mm
- Tested up to 800 x 800 mm

Dimension D remains constant. Dimension E varies according to GKF-thickness. Dimension C corresponds to the respective cladding thicknesses.

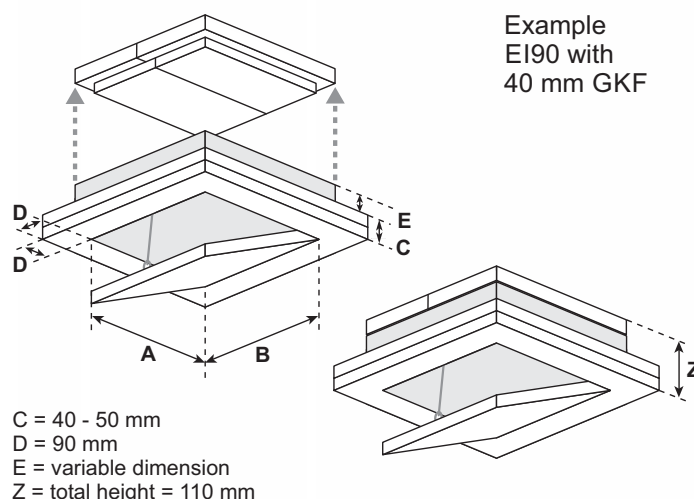
Customized solutions

Customized sizes can be produced in every dimension upon enquiry.

Locks

The access panel can be equipped with the following types of locks:

- FS** Four-square lock with white collar
- Z** Round-cylinder lock with key
- PZ** Profile cylinder lock with metal collar



Example
EI90 with
40 mm GKF

C = 40 - 50 mm
D = 90 mm
E = variable dimension
Z = total height = 110 mm

Particular advantages of our system

- Economical solution
- Delivery at short notice on request
- Quick and easy installation
- Sophisticated solution
- Flush installation in ceilings

FF Systembau
Access Panels

Access panel fire resistance

System F6 - 120 - For ceilings

EI120

Fire resistance



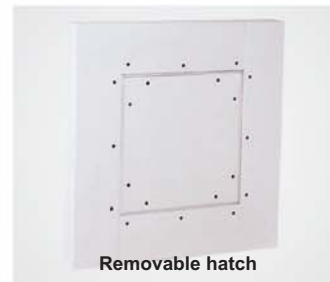
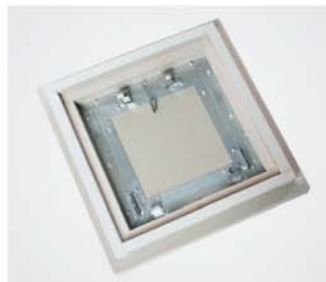
Description

The access panel consists of aluminium profiles with plasterboard inlay Fireboard 50 mm.

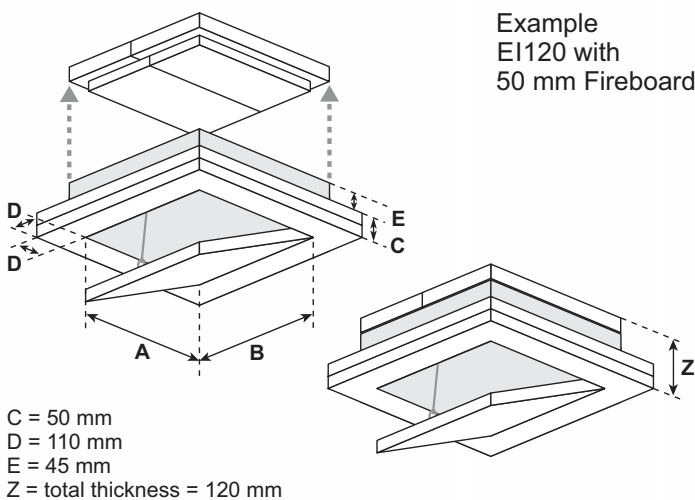
Both outer and inner frame of the access panel consist of four single frames, which are firmly connected due to a special welding process. The fire-resistant double-layer on the reverse side meets the required fire resistance class. The access panel is equipped with two catchwires.

In order to avoid accidents, this safety-system has to be secured after each opening.

A joint gap of 2.5 mm is visible between outer frame and door leaf, which is equipped with a circumferential fire-resistant seal (foaming). The concealed snap locks open the access panel when pressure is applied to the flap on the spring loaded latch side.



Removable hatch



Capabilities

In non-bearing plasterboard ceilings of the fire resistance class EI120.

Tested in accordance with the "European Norms EN 1364-2 and EN 1634-3".

Dimensions

The access panel fire resistance is available in the following standard sizes. Dimensions A and B as follows:

- 200 x 200 mm
- 300 x 300 mm
- 400 x 400 mm
- 500 x 500 mm
- 600 x 600 mm
- tested up to 800 x 800 mm

Dimensions D and E remain constant. Dimension C corresponds to the respective cladding thicknesses.

Customized solutions

Customized sizes can be produced in every dimension upon enquiry.

Locks

The access panel can be equipped with the following types of locks:

- FS** Four-square lock with white collar
- Z** Round-cylinder lock with key
- PZ** Profile cylinder lock with metal collar

Particular advantages of our system

- Economical solution
- Delivery at short notice on request
- Quick and easy installation
- Sophisticated solution
- Flush installation in plasterboard ceilings

Access panels for solid walls

Solid walls



Page 25

Access panel for solid walls and ceilings without fire resistance

System MW



Page 26

Access panel fire resistance EI30

for solid walls
System F5 - 30



Page 27

Access panel fire resistance EI60

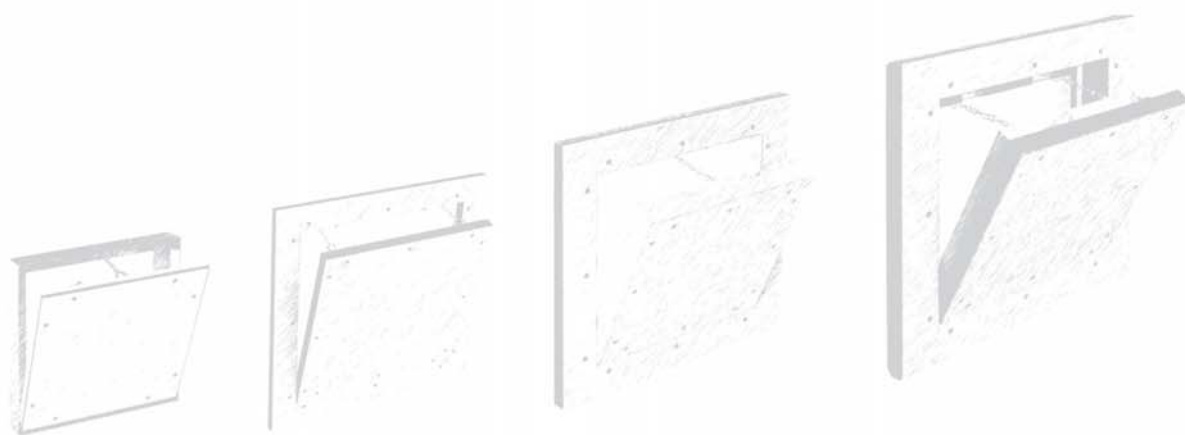
for solid walls
System F5 - 60



Page 28

Access panel fire resistance EI90/EI120

for solid walls
System F5 - 90/120



FF Systembau
Access Panels

Access panel for solid walls and ceilings

System MW - Aluminium frame, with or without drywall inlay, for solid walls and ceilings

For solid walls
and ceilings



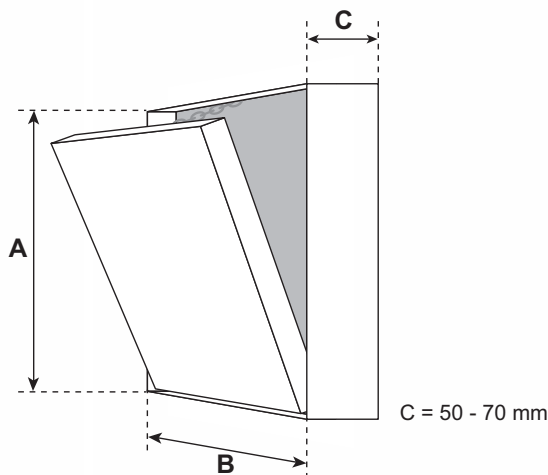
Description

The access panel consists of a welded aluminium frame and is available with or without drywall inlay of 12.5 mm, 15 mm or 25 mm and two latches.

Both an outer and an inner frame assembly consists of high grade aluminium which is bonded with a special welding process. For sizes 300 x 300 mm and up the access panels are equipped with a safety system to prevent accidental opening. This safety system must be reattached if the hatch is removed.

The reveal of 1.5 mm is visible between the outer frame and door hatch. The concealed snap locks open the access panel when pressure is applied to the spring loaded latch side.

This access panel is designed to be recessed into concrete wall and ceiling systems. This panel comes with predrilled holes for easy installation.



Capabilities

Solid walls and ceilings

Dimensions

These panels are customizations, produced exactly to dimensions given by the customer.

Particular advantages of our system

- Superior engineering & innovative design
- Fast delivery
- Quick and easy installation
- Solid aluminium frame
- Flush installation
- Also available for on-site plaster or tile application

Locks

The access panel can be equipped with the following types of locks:

- FS** Four-square lock with white collar
- Z** Round-cylinder lock with key
- PZ** Profile cylinder lock with metal collar

Access panel fire resistance

System F5 - 30 - For solid walls

EI30

Description

The access panel consists of aluminium profiles with plasterboard inlay GKF 25 mm (EI30).

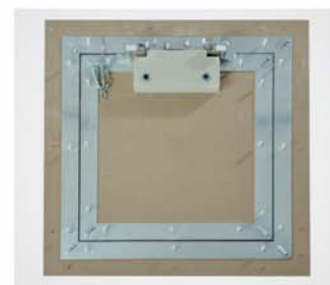
Both, an outer and an inner frame of the access panel consist of four single frames, which are firmly connected due to a special welding process. The access panel is equipped with two catchwires. In order to avoid accidents, this safety-system has to be secured after each opening.

A joint gap of 1.5 mm is visible between outer frame and door leaf, which is equipped with a circumferential fire-resistant seal (foaming). The concealed snap locks open the access panel when pressure is applied to the flap on the spring loaded latch side.

Using the enclosed masonry straps, the access panel can be fixed easily into solid walls.



Removable hatch



Capabilities

In solid walls with the fire resistance class EI30:

- for all suitable solid wall constructions

Tested in accordance with the "European Norms EN 1634-1 and EN 1634-3".

Dimensions

The access panel fire resistance is available in the following standard sizes. Dimensions A and B as follows:

- 200 x 200 mm
- 300 x 300 mm
- 400 x 400 mm
- 500 x 500 mm
- 600 x 600 mm
- tested up to 800 x 800 mm

Dimension D remains constant. Dimension C corresponds to the cladding thickness.

Customized solutions

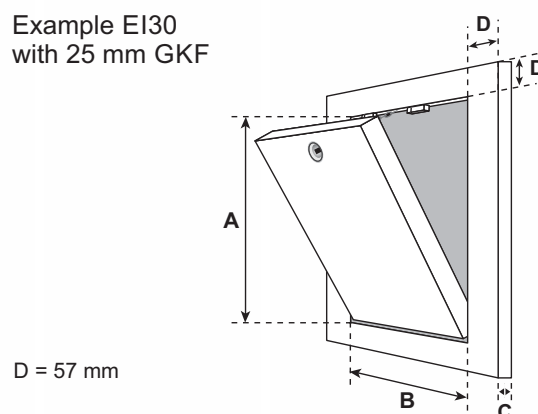
Customized sizes can be produced in every dimension upon enquiry.

Locks

The access panel can be equipped with the following types of locks:

- FS** Four-square lock with white collar
- Z** Round-cylinder lock with key
- PZ** Profile cylinder lock with metal collar

Example EI30
with 25 mm GKF



D = 57 mm

Particular advantages of our system

- Economical solution
- Delivery at short notice on request
- Quick and easy installation
- Sophisticated solution
- Flush installation in solid walls
- Also suitable for tiling or plastering

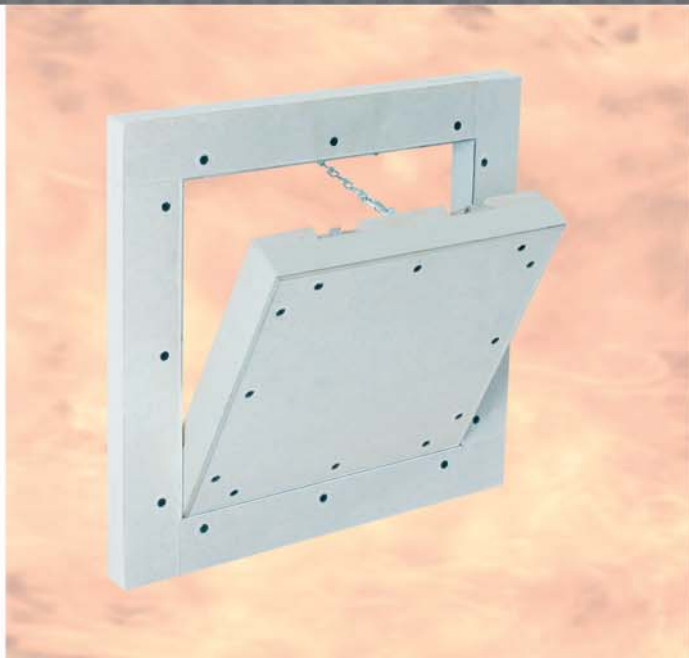
FF Systembau
Access Panels

Access panel fire resistance

System F5 - 60 - For solid walls

EI60

Fire resistance



Description

The access panel consists of aluminium profiles with plasterboard inlay GKF 30 mm (EI60).

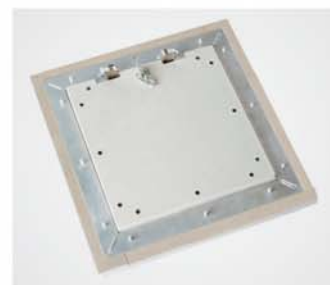
Both, an outer and an inner frame of the access panel consist of four single frames, which are firmly connected due to a special welding process. The access panel is equipped with two catchwires. In order to avoid accidents, this safety-system has to be secured after each opening.

A joint gap of 2.5 mm is visible between outer frame and door leaf, which is equipped with a circumferential fire-resistant seal (foaming). The concealed snap locks open the access panel when pressure is applied to the flap on the spring loaded latch side.

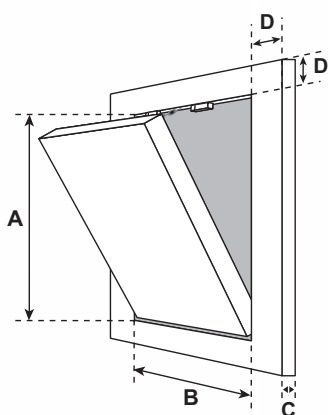
Using the enclosed masonry straps, the access panel can be fixed easily into solid walls.



Removable hatch



Example EI60
with 30 mm GKF



D = 57 mm

Capabilities

In solid walls with the fire resistance class Ei60:

- for all suitable solid wall constructions

Tested in accordance with the "European Norms EN 1634-1 and EN 1634-3".

Dimensions

The access panel fire resistance is available in the following standard sizes. Dimensions A and B as follows:

- 200 x 200 mm
- 300 x 300 mm
- 400 x 400 mm
- 500 x 500 mm
- 600 x 600 mm
- tested up to 800 x 800 mm

Customized solutions

Customized sizes can be produced in every dimension upon enquiry.

Locks

The access panel can be equipped with the following types of locks:

- FS** Four-square lock with white collar
- Z** Round-cylinder lock with key
- PZ** Profile cylinder lock with metal collar

Particular advantages of our system

- Economical solution
- Delivery at short notice on request
- Quick and easy installation
- Sophisticated solution
- Flush installation in solid walls
- Also suitable for tiling and plastering

Access panel fire resistance EI90/EI120

System F5 - 90/120 - For solid walls

Description

The access panel consists of aluminium profiles with plasterboard inlay GKF 40 mm (EI90).

Both, an outer and an inner frame of the access panel consist of four single frames, which are firmly connected due to a special welding process. The fire-resistant double-layer cladding on the reverse side meets the required fire resistance standard. The access panel is equipped with two catchwires. In order to avoid accidents, this safety-system has to be secured after each opening.

A joint gap of 1.5 mm is visible between outer frame and door leaf, which is equipped with a circumferential fire-resistant seal (foaming). The concealed snap locks open the access panel when pressure is applied to the flap on the spring loaded latch side.

Using the enclosed masonry straps, the access panel can be fixed easily into solid walls.



Removable hatch



Capabilities

In solid walls with the fire resistance class EI90/EI120:

- for all suitable solid wall constructions

Tested in accordance with the "European Norms EN 1634-1 and EN 1634-3".

Dimensions

The access panel fire resistance is available in the following standard sizes. Dimensions A and B as follows:

- 200 x 200 mm
- 300 x 300 mm
- 400 x 400 mm
- 500 x 500 mm
- 600 x 600 mm
- tested up to H: 1500 x B: 1000 mm

The clearance is smaller by 50 mm each.

Locks

The access panel can be equipped with the following types of locks:

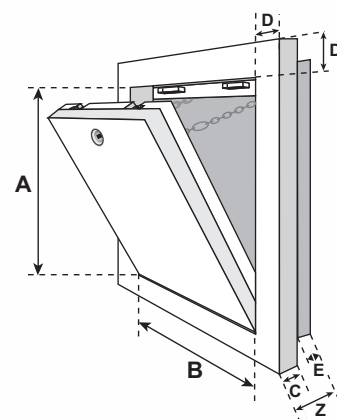
EI90:

- FS** Four-square lock with white collar
- Z** Round-cylinder lock with key
- PZ** Profile cylinder lock with metal collar

EI120:

- FS** Four-square lock with white collar

C = 40 mm
D = 57 mm
E = 40 mm
Z = total thickness = 80 mm



Customized solutions

Customized sizes can be produced in every dimension upon enquiry.

Particular advantages of our system

- Economical solution
- Delivery at short notice on request
- Quick and easy installation
- Sophisticated solution
- Flush installation in solid walls
- Also suitable for tiling or plastering

FF Systembau
Access Panels

Access panels for exterior/facade



page 30

**Access panel for
facade watertight
for plastering**

System MPWD

NEW



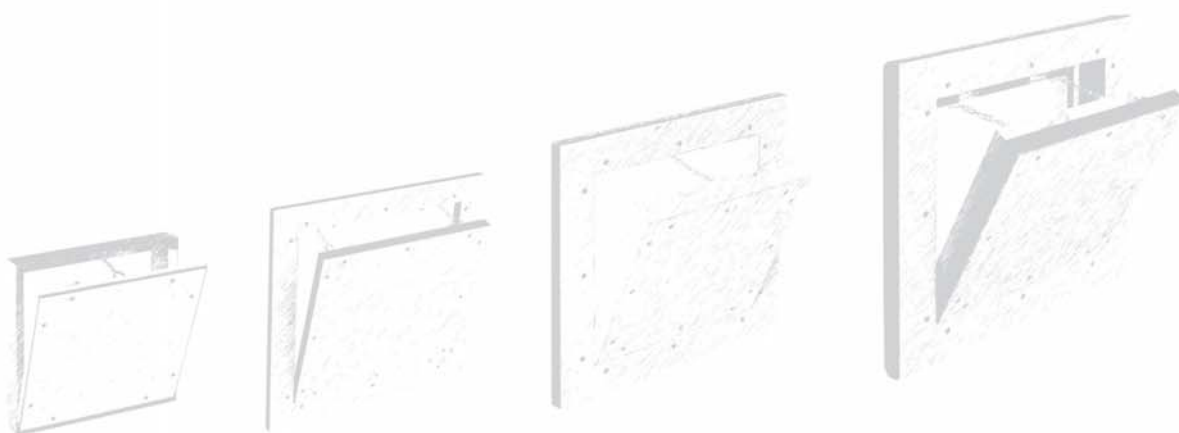
page 31

**Access panel for
exterior watertight**

System EXT

NEW

Exterior/facade



FF Systembau
Access Panels

Access panel for facade "watertight"

System MPWD - for plastering

NEW

Description

The access panel consists of aluminium profiles, a cement board and a round cylinder lock with key. Both, an outer and an inner frame of the access panel consist of four single frames, which are firmly connected due to a special welding process. The access panel is equipped with a safety-system against accidental opening.

In order to avoid accidents, this safety-system has to be secured after each opening. A joint gap of 3 mm is visible between outer frame and door leaf, which is equipped with an innovative brush joint and, in addition, with a special joint. Access panels for facades in the outer area are applicable for direct mounting onto solid walls (without external wall insulation system) or for installation into a wall insulation system (foam-sealed) from an insulation thickness of 80 mm.



Standard sizes

System MPWD	Dimensions in mm		
	A	B	C
MPWD200200	200	200	78
MPWD300300	300	300	78
MPWD400400	400	400	78
MPWD500500	500	500	78
MPWD600600	600	600	78

All standard sizes are available at short notice from stock.

The access panel is "watertight".

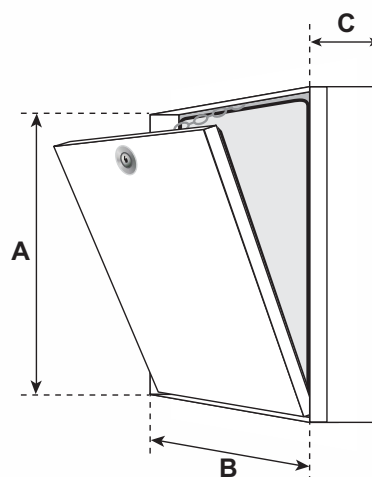
Customized solutions

Customized sizes can be produced in every dimension upon enquiry.

Locks

The access panel can be equipped with the following types of locks:

- Z** Round-cylinder lock with key (standard)
- SD1** Screwdriver operated cam latch
- H1** Hex Head Cam Latch
- P1** Pinned Hex Head Cam Latch



Particular advantages of our system

- Economical solution
- Fast delivery
- Quick and easy installation
- Solid aluminium frame
- Superior engineering & innovative design
- Flush installation in facade walls

FF Systembau
Access Panels

Access panel for exterior "watertight"

System EXT - with metal surface

NEW



Description

The access panel EXT consists of a solid aluminium frame and a hatch made of 1 mm aluminium sheet with integrated insulation.

A safe installation in all types of walls is ensured by fixation through the predrilled holes in the sides of the outer frame.

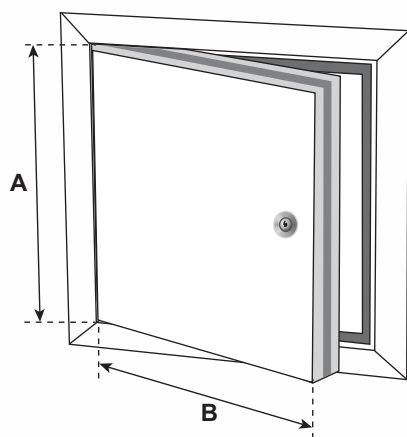
The outer frame is equipped with a special circumferential sealing strip for a "watertight" joint. An innovative brush joint fixed at the door leaf serves as protection against dust.

Capabilities

The access panel EXT can be installed in each type of solid walls and walls with exterior insulation finishing systems.

The access panel was specially developed for exterior application.

Exterior



Standard sizes

The access panel EXT is available in the following standard sizes:

System EXT	Dimensions in mm	
	A	B
EXT200200AL	200	200
EXT300300AL	300	300
EXT400400AL	400	400
EXT500500AL	500	500
EXT600600AL	600	600

All standard sizes are available at short notice from stock.

The access panel is "watertight".

Customized solutions

Customized sizes can be produced in every dimension upon enquiry.

Locks

The access panel can be equipped with the following types of locks:

FS Four square lock

Z Round-cylinder lock with key

Particular advantages of our system

- Economical solution
- Fast delivery
- Quick and easy installation
- Superior engineering & innovative design
- All-purpose
- Lockable

FF Systembau

Access Panels

Locks

The locks listed below can be mounted in our access panels and -doors:

SN

Snap lock

SN



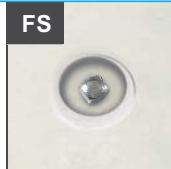
SN



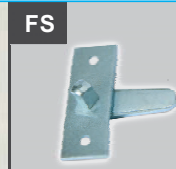
FS

Four-square lock with white collar

FS



FS



Z

Round-cylinder lock with key

Z



Z



PZ

Profile cylinder lock with metal collar

PZ1



without
profile cylinder



including
profile cylinder

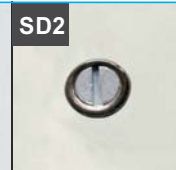
SD

Screwdriver operated cam latch

SD1



SD2



H

Hex head cam latch

H1



H2



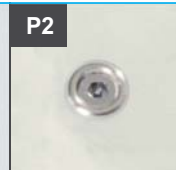
P

Pinned hex head cam latch

P1



P2



Access panels sheet steel



Page 34

**Access panel
sheet steel with
four-square lock**

System B1



Page 34

**Access panel
sheet steel
airtight and dust-
proof with four-
square lock**

System B1



Page 35

**Access panel
sheet steel with
snap lock**

System B2



Page 36

**Access panel
sheet steel with
cylinder lock**

System B3



Page 36

**Access panel
sheet steel
airtight and dust-
proof with cylinder
lock**

System B3



Page 37

**Access panel
sheet steel with
profile cylinder**

System B4



Page 38

**Access panel
sheet steel with
magnetic lock**

System B5



Stainless steel



Double-doors



Stainless steel

Access panel sheet steel

System B1 - With four-square lock

Description

The access panel consists of a solid outer frame and a hatch, made of galvanized sheet steel with integrated four-square lock. The standard colour is white - RAL9016.

The profile of the outer frame is chamfered. Therefore, the hatch is fixed flush with surfaces made of plaster or gypsum. The four riveted wall anchors ensure a safe installation in walls or ceilings. The door leaf is removable and suitable for left-hinged or right-hinged doors.

Capabilities

Sheet steel access panels can be mounted in partitions and ceilings as well as in solid walls and ceilings.



Customized solutions

Customized sizes can be produced in every dimension upon enquiry.

Furthermore, sheet steel access panels are available in many other versions, e.g. galvanized, different-coloured etc.

Please do not hesitate to contact us.

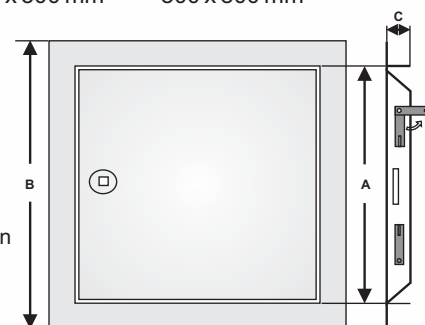
Dimensions

The access panel sheet steel with four-square lock is available in the following standard sizes. Dimension A as follows:

- | | | |
|----------------|----------------|----------------|
| ■ 150 x 150 mm | ■ 250 x 250 mm | ■ 600 x 400 mm |
| ■ 150 x 200 mm | ■ 300 x 300 mm | ■ 600 x 600 mm |
| ■ 200 x 200 mm | ■ 400 x 400 mm | ■ 600 x 800 mm |
| ■ 200 x 250 mm | ■ 500 x 500 mm | ■ 800 x 800 mm |
| ■ 200 x 300 mm | | |

(these are wall opening dimensions)

A = wall opening dimension
B = dimension A+35 mm
C = 25 mm



NEW: This access panel is also available in an "airtight and dust-proof" version and in stainless steel!



Tested up to 600 x 600 mm

Particular advantages of our system

- Economical solution
- Delivery at short notice on request
- Quick and easy installation
- Sophisticated solution
- Available in nearly every colour

FF Systembau
Access Panels

Access panel sheet steel

System B2 - With snap locks

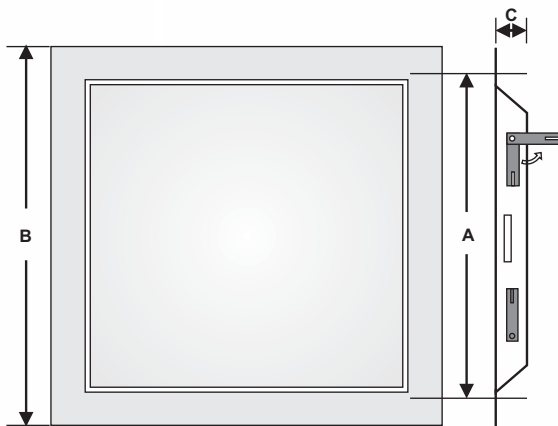
Description

The access panel consists of a solid outer frame and a hatch, made of galvanized sheet steel. The concealed snap locks open the access panel when pressure is applied to the flap on the spring loaded latch side. The standard colour is white - RAL9016.

The profile of the outer frame is chamfered. Therefore, the hatch is fixed flush with surfaces made of plaster or gypsum. The four riveted wall anchors ensure a safe installation in walls or ceilings. The door leaf is removable and suitable for left-hinged and right-hinged doors.



Stainless steel



A = wall opening dimension
B = dimension A+35 mm
C = 25 mm

Particular advantages of our system

- Economical solution
- Delivery at short notice is possible
- Quick and easy installation
- Sophisticated solution
- Available in nearly every colour

Capabilities

Sheet steel access panels can be installed in partitions and ceilings as well as in solid walls and ceilings.

Dimensions

The access panel sheet steel with snap lock is available in the following standard sizes. Dimension A as follows:

- 200 x 200 mm
- 300 x 300 mm
- 400 x 400 mm
- 500 x 500 mm
- 600 x 600 mm

(these are wall opening dimensions)

Customized solutions

Customized sizes can be produced in every dimension upon enquiry.

Furthermore, sheet steel access panels are available in many other versions, e.g. galvanized, different-coloured etc.

Please do not hesitate to call us.

Access panel sheet steel

System B3 - With cylinder lock

Description

The access panel consists of a solid outer frame and a hatch, made of galvanized sheet steel. The panel is white powder coated and comes with keyoperated cylinder lock.

The access panel rounded-off profile ensures a smooth transition to almost any surface. The four riveted wall anchors ensure a safe installation in walls or ceilings. The door is removable and suitable for left-hand or right-hand opening.

Capabilities

Sheet steel access panels can be mounted in partitions and ceilings as well as in solid walls and ceilings.



Stainless steel



Customized solutions

Customized sizes can be produced in every dimension upon enquiry.

Furthermore, sheet steel access panels are available in many other versions, e.g. galvanized, different-coloured etc.

Please do not hesitate to contact us.

NEW: This access panel is also available in an "airtight and dust-proof" version and in stainless steel!



Tested up to 600 x 600 mm

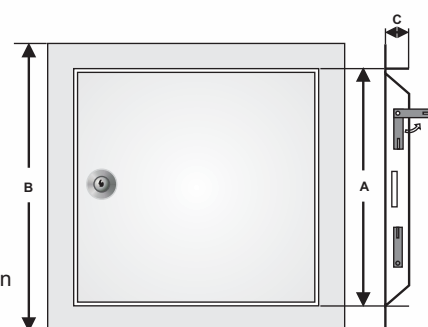
Dimensions

The access panel sheet steel with cylinder lock is available in the following standard sizes. Dimension A as follows:

- 200 x 200 mm
- 300 x 300 mm
- 400 x 400 mm
- 500 x 500 mm
- 600 x 600 mm

(these are wall opening dimensions)

A = wall opening dimension
B = dimension A+35 mm
C = 25 mm



Particular advantages of our system

- Fast delivery
- Economical solution
- Quick and easy installation
- Superior engineering and innovative design
- Available in nearly every colour
- Lockable

FF Systembau
Access Panels

Access panel sheet steel

System B4 - With profile cylinder lock – prepared for profile cylinder provided by customer!

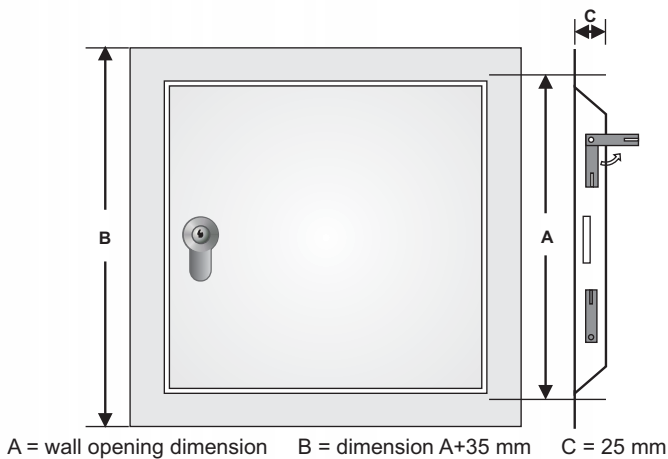


Description

The access panel consists of a solid outer frame and a hatch, made of galvanized sheet steel with integrated profile cylinder lock. The standard colour is white - RAL9016.

The profile of the outer frame is chamfered. Therefore, the hatch is fixed flush with surfaces made of plaster or gypsum. The four riveted wall anchors ensure a safe installation in walls or ceilings. The door leaf is removable and suitable for left-hinged and right-hinged doors.

The access panel can be locked with a profile cylinder lock (profile cylinder provided by customer).



Capabilities

Sheet steel access panels can be installed in partitions and ceilings as well as in solid walls and ceilings.

Dimensions

The access panel sheet steel with profile cylinder is available in the following standard sizes. Dimension A as follows:

- 200 x 200 mm
- 300 x 300 mm
- 400 x 400 mm
- 500 x 500 mm
- 600 x 600 mm

(these are wall opening dimensions)

Customized solutions

Customized sizes can be produced in every dimension upon enquiry.

Furthermore, sheet steel access panels are available in many other versions, e.g. galvanized, different-coloured or made from stainless steel.

Please do not hesitate to call us.

Particular advantages of our system

- Economical solution
- Delivery at short notice on request
- Quick and easy installation
- Sophisticated solution
- Available in nearly every colour
- Lockable
- Perfectly suitable for on site locking systems

Access panel sheet steel

System B5 - with magnetic lock

Description

The access panel consists of a solid outer frame and hatch, made of galvanized sheet steel or stainless steel with integrated magnetic lock. The standard colour is white RAL9016.

A smooth transition to almost any surface is formed by the rounded-off profile. Four riveted wall anchors ensure a safe installation in walls or ceilings. The door is removable and suitable for left-hand or right-hand opening.

The access panel is provided with a magnetic lock and a recessed grip.

Capabilities

Sheet steel access panels can be mounted in walls or ceilings.



Customized solutions

Customized sizes can be produced in every dimension upon enquiry.

Furthermore, sheet steel access panels are available in many other versions as galvanized or from stainless steel. A double-door version is also available.

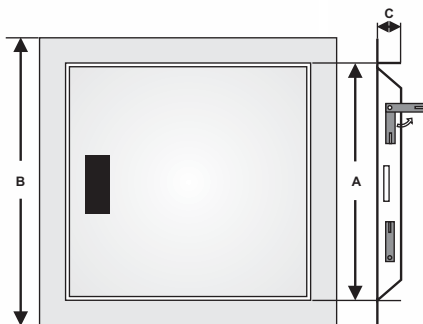
Please do not hesitate to contact us!

Dimensions

The access panel sheet steel with magnetic lock is available in the following standard sizes. Dimension A as follows:

- 150 x 150 mm
- 200 x 200 mm
- 300 x 300 mm
- 400 x 400 mm
- 500 x 500 mm
- 600 x 600 mm

(these are wall opening dimensions)



A = wall opening dimension
B = dimension A + 35 mm
C = 25 mm

Particular advantages of our system

- Economical solution
- Fast delivery
- Quick and easy installation
- Superior engineering and innovative design
- Available in nearly every colour

Copyright by FF Systembau GmbH

Design:

Kängoo Mediendesign, www.kaengoo.com

Cover:

ACG

Subject to change

We do not accept liability for printing errors and mistakes



FF Systembau

Access Panels

3rd edition